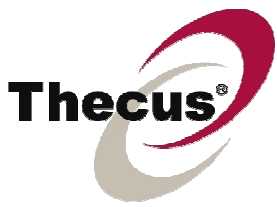


# Thecus Y.E.S Box N2100 iTunes Configuration Guide





# Index

Index .....	2
The Merits of Y.E.S Box N2100 iTunes .....	3
Share Music Centrally .....	3
Save Disk Space .....	3
Music Play Center .....	3
iTunes Configuration .....	4
Quick Use .....	4
Configure iTunes .....	5
iTunes .....	5
Server Name .....	6
DB Name .....	7
Password .....	8
Time Scan .....	8
Rescan Interval .....	8
MP3 Tag Encode .....	9
Manage Music .....	10
Looking for N2100 shared music .....	10
Notes .....	10
Support and limitation .....	10



## **The Merits of Y.E.S Box N2100 iTunes**

### **Share Music Centrally**

All music is concentrated in Y.E.S Box N2100 iTunes Server for easy management.

### **Save Disk Space**

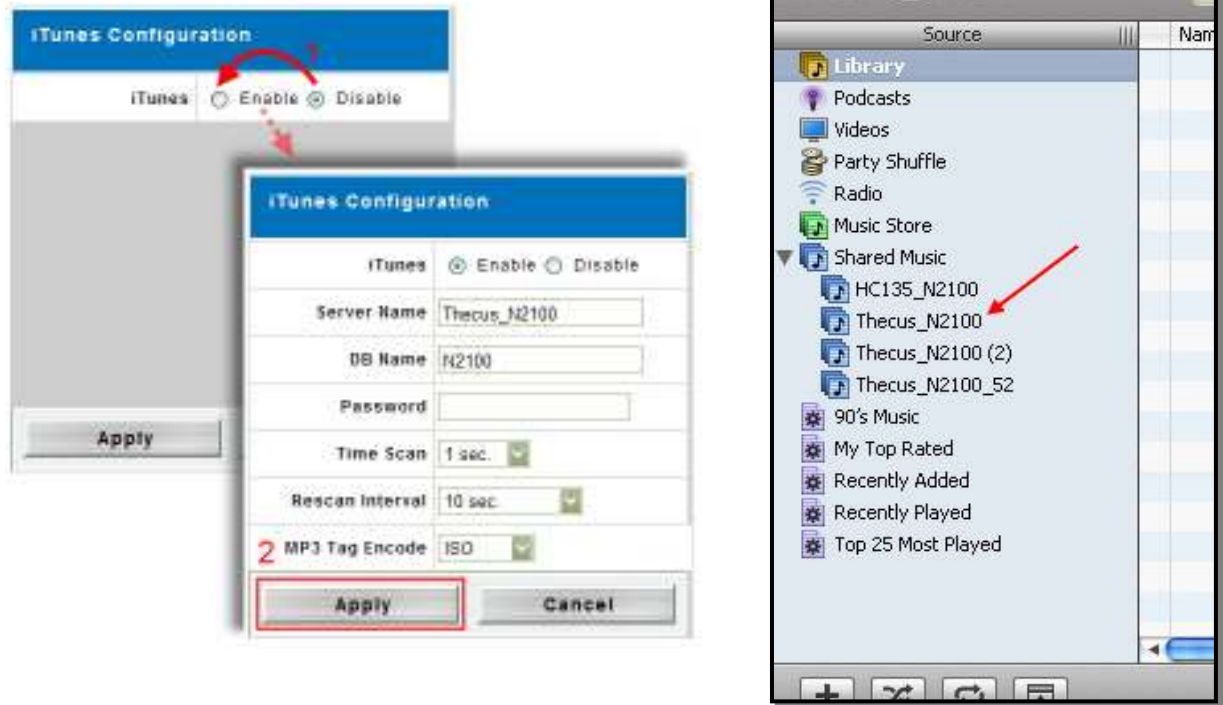
No more duplicate music files to save disk space.

### **Music Play Center**

Play shared songs through Y.E.S Box N2100 iTunes Server streamed over the network to your computer.

# iTunes Configuration

## Quick Use



After enable iTunes in N2100 through Web GUI, the music servers available on the network appear in your iTunes Source list immediately.

## Configure iTunes

iTunes Configuration	
iTunes	<input checked="" type="radio"/> Enable <input type="radio"/> Disable
Server Name	<input type="text" value="Thecus_N2100"/>
DB Name	<input type="text" value="N2100"/>
Password	<input type="text"/>
Time Scan	1 sec. <input type="button" value="v"/>
Rescan Interval	10 sec. <input type="button" value="v"/>
MP3 Tag Encode	ISO <input type="button" value="v"/>
<input type="button" value="Apply"/> <input type="button" value="Cancel"/>	

### iTunes

Enable: Share Music over local network

Disable: Disable sharing Music

## Server Name

The name will appear in Shared Music of iTunes Source list.

### For example

If fill in *iTunes\_Server* and apply, the name will show/change in the Shared Music of iTunes Source list immediately

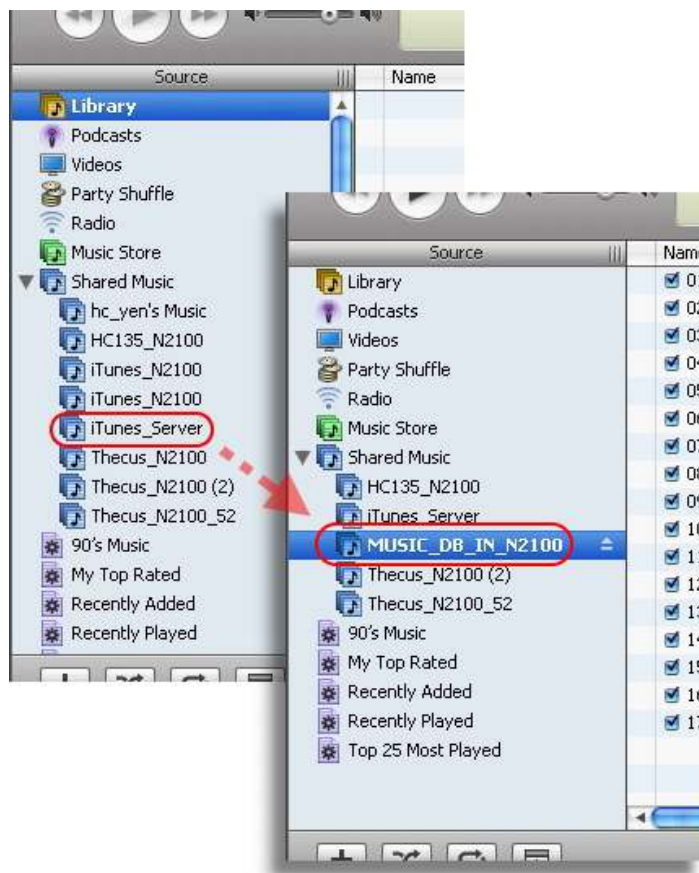


## DB Name

After Clicking Server, the name of server will change to be DB Name

### For example

If Server Name is iTunes\_Server, the DB Name is *MUSIC\_DB\_IN\_N2100* and applies the setting, after click iTunes\_Server in Shared Music, the Server name will change to DB name: *MUSIC\_DB\_IN\_N2100* immediately



## Password

Disable Password: Leave the column blank

Request Password: fill in the password in column

If enable request password, after click the Server in Shared Music, it will popup a dialog box of password request, only enter the correct password to see the music files



## Time Scan

If you have VBR files that change bit rate later, the N2100 will calculate a wrong duration for these files. If that is the case, you can tweak Time Scan option.

## Rescan Interval

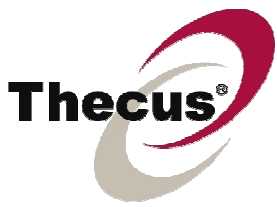
Rescan interval for iTunes defines how often the whole music database is rescanned in iTunes server. The recommended setting is 30 seconds or longer. In case the music database is empty, without any music, the iTunes application may show error message.





## MP3 Tag Encode

Encode format is for recognizing the text of tag in music files.



## Manage Music

Manage music as manage files; please refer to User Manual **Chapter 3. How to Use YES Box N2100**, the only difference is music file have to be saved in iTunes folder.

## Looking for N2100 shared music

Your computer have to connect to N2100 through a local network and running iTunes 4.5 or later, you can look for music that's being shared by N2100 and have it appear in your Source list. (The other computers need to be in the same subnet and also running iTunes 4.5 or later.)

## Notes

Play music from N2100 on the computer, the computers need to be in the same subnet and also running iTunes 4.5 or later

## Support and limitation

You can shared MP3, Apple Lossless, AIFF, WAV, and AAC files, and shared radio station links. Audible spoken word content or QuickTime sound files can't be shared.