

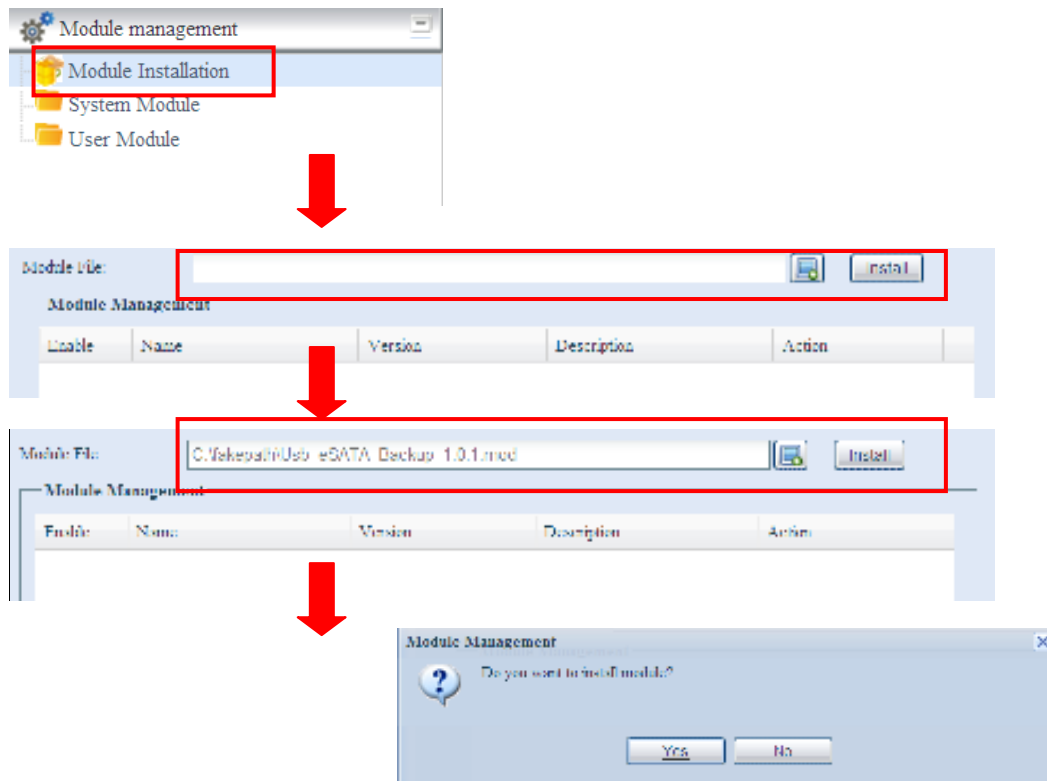
USB/eSATA Scheduled Backup User Guide

Notes:

1. Only supports FAT/FAT32/EXT3 file systems.
2. This functions supports a maximum of five tasks.
3. Backup the local disk data to an external storage device.
You can select instant or scheduled (daily/weekly/monthly) backup.

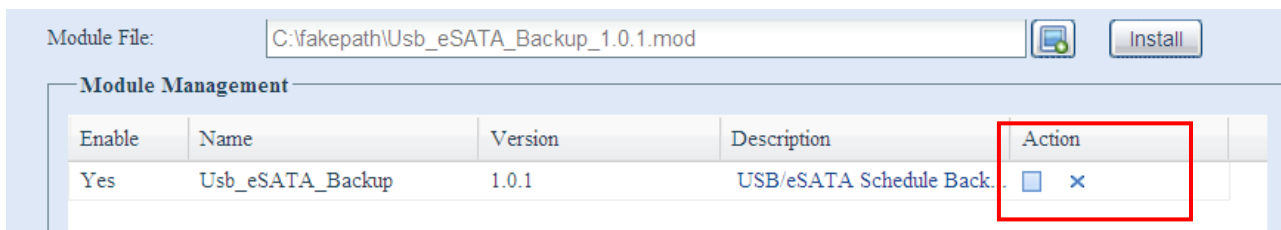
Step 1:

Install the “Usb_eSATA_Backup_1.x.x.mod” module.



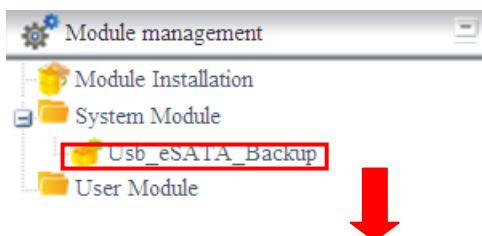
Step 2:

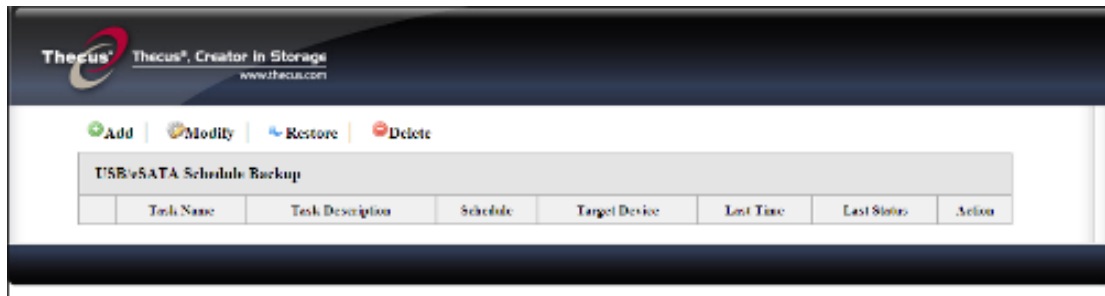
Enable the “Usb_eSATA_Backup” module.



Step 3:

Double-click “Usb_eSATA_Backup” to start the module.





USB/SATA Schedule Backup

Task Name: (Click 0-9, a-z, A-Z, _)

Task Description:

Target Device: (Target device only support ext3/ext4 file system)

Backup Mode: ☒ Synchronize (Compare source and target then delete unused files) ☐ Incremental (Copy file from source to target)

Source Folder: (Please click Shift or Ctrl button, and click mouse left button to select multiple folders or remove selected folder)

Schedule

Enable/Disable: ☒ Enabled ☐ Disabled

Time: :

Type: ☒ Daily ☐ Weekly ☐ Monthly

Add: To create a new task.

Modify: Revise an existing task.

Restore: Restore the data.

Delete: Delete a task.

Task Name: Back up the task name.

Task Description: A description of the current task.

Target Device: Select target device.

Action: Immediately back up data to the external storage device.

Backup Mode: Select "Synchronize" or "Incremental" for the copy options.

By selecting "Synchronize", the data on the internal drives of the NAS and the external storage device are synchronized. Any different files on the external device are deleted.

When you select "Incremental", files are copied from the NAS to the external device.

Source folder: Select source folder (you can choose several).

Schedule: To back up data according to a schedule. You can select the week, day, and time to execute the backup.