

## Copyright and Trademarks

Copyright © 2005 Thecus Technology Corporation. Specifications are subject to change without notice. All rights reserved. Thecus is a registered trademark of Thecus Technology Corp. Microsoft, Windows, and the Windows logo are registered trademarks of Microsoft Corporation. Apple and Apple OS X are registered trademarks of Apple Computers, Inc. All other trademarks and brand names are the property of their respective owners.

## About This Guide

All information in this manual has been carefully verified to ensure its correctness. In case of an error, please provide us with your feedback. Thecus Technology Corporation reserves the right to modify the contents of this manual without notice.

## Limited Warranty

Thecus Technology Corporation guarantees all components of Thecus N2050 are thoroughly tested before they leave the factory and should function normally under general usage. In case of any system malfunctions, Thecus Technology Corporation and its local representatives and dealers are responsible for repair without cost to the customer if the product fails within the warranty period and under normal usage. Thecus Technology Corporation is not responsible for any damage or loss of data deemed to be caused by its products. It is highly recommended that users conduct necessary back-up practices.

Product name: Thecus N2050

Version: 2.0

Release Date: January 2007

## N2050 Specifications

### Storage

HDD Bays	2 x bays of 3.5" SATA HDD
HDD Capacity	80/120/160/200/250/300/400/500 GB
RAID controller	Hardware RAID
RAID Levels	Striping (RAID 0) Mirroring (RAID 1)

### External Interfaces

SATA/USB dual mode	
USB 2.0	Up to 480 Mbps
eSATA	SATA I - Up to 1.5 Gbps SATA II - Up to 3 Gbps

### Installations

Plug-n-Play	
No drivers required for Windows/MAC OS X	

### Dimensions

Width	160 mm
Height	85 mm
Depth	200 mm

### Power Requirements

AC Voltage	100~240 VAC
Frequency	47~63 Hz AC

### System Requirements

Microsoft Windows 2000, XP, 2003	
MAC OS X	

### Warranty

One year limited warranty	
---------------------------	--

### Support Information

support@thecus.com

## Quick Installation Guide

### System Requirements

To configure the Thecus N2050, you must have a PC equipped with the following :

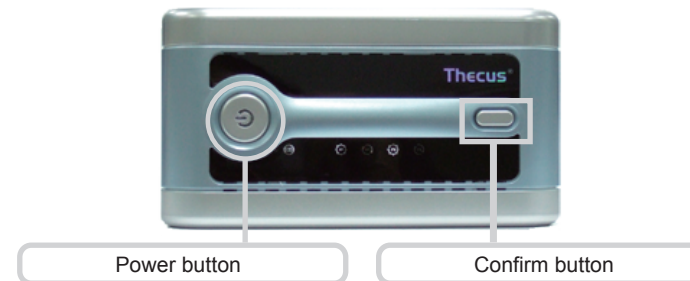
An USB port or an eSATA port (optional)  
Microsoft Windows 2000, XP, or 2003 /  
MAC OS X

### Package Contents







- Thecus N2050
- Quick Installation Guide
- Power Cord
- Power Adaptor
- Accessory pack
  - Hard disk drive Screws x 12
  - 1 meter USB cable
  - 1 meter eSATA to eSATA cable

### Hardware Overview

#### N2050 Front Panel



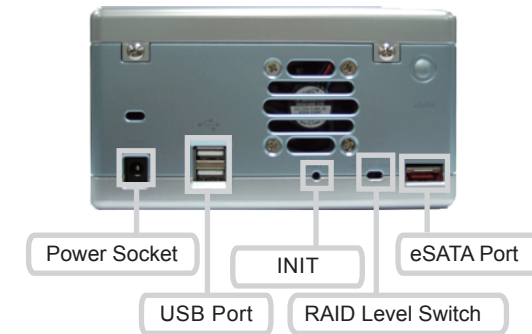
1. Power button: Press it to turn on N2050.
2. Confirm button: To turn off N2050, user has to press and hold the Confirm button first then press the Power button.

- |   |                     |
|---|---------------------|
|    | Power LED           |
|    | SYSTEM ACTIVITY LED |
|  | HDD 1 POWER LED     |
|  | HDD 1 ACTIVITY LED  |
|  | HDD 2 POWER LED     |
|  | HDD 2 ACTIVITY LED  |

## Front Panel LED Definition

Creating RAID (Several seconds for both RAID 0 and RAID 1)				
System Activity	HDD1 Power	HDD1 Activity	HDD2 Power	HDD2 Activity
Blinks	Glows	Blinks	Glows	Blinks
Rebuilding RAID 1 (Around 40 minutes for 80GB hard disks x 2)				
System Activity	HDD1 Power	HDD1 Activity	HDD2 Power	HDD2 Activity
OFF	Glows(source) /Blinks(Target)	Glows	Glows(source) /Blinks(Target)	Glows
System ready for use				
System Activity	HDD1 Power	HDD1 Activity	HDD2 Power	HDD2 Activity
OFF	Glows	OFF	Glows	OFF
Accessing N2050				
System Activity	HDD1 Power	HDD1 Activity	HDD2 Power	HDD2 Activity
Blinks	Glows	Blinks	Glows	Blinks
HDD1 failed				
System Activity	HDD1 Power	HDD1 Activity	HDD2 Power	HDD2 Activity
OFF	Blinks	Blinks	Glows	OFF
HDD2 failed				
System Activity	HDD1 Power	HDD1 Activity	HDD2 Power	HDD2 Activity
OFF	Glows	OFF	Blinks	Blinks
System failed				
System Activity	HDD1 Power	HDD1 Activity	HDD2 Power	HDD2 Activity
Blinks	OFF	OFF	OFF	OFF
System not initialized or initializing				
System Activity	HDD1 Power	HDD1 Activity	HDD2 Power	HDD2 Activity
OFF	Blinks	Blinks	Blinks	Blinks

## N2050 Back Panel



1. Power Socket: Connect power cord, ideally from a surge protector.
2. USB Port: USB connection to your system.
3. RAID Level switch: Switch between RAID 0 and RAID 1.
4. eSATA Port: eSATA connection to your system.

## Harddisk Installation

The N2050 supports up to two Serial ATA (SATA) hard disk drives. To install hard disk drives into the N2050, please follow the steps below:

Remove the two screws located on the back of the unit using a Philips screw driver

**STEP 1**



Slide the upper cover backward then lift it up to remove it.

STEP  
2



Unfasten four mounting screws for the hard disk drive cage.

STEP  
3



Lift up the hard disk cage.

STEP  
4



Carefully insert two brand new 3.5" SATA hard disk drives into the cage, and secure the hard disk drive with screws included in the accessory pack.

STEP  
5



Carefully lower the hard disk drive cage into the N2050. Make sure the cage is in place and the connectors are aligned. Fasten the screws with a Philips screw driver.

STEP  
6



## Setup and Connect the N2050

Select the RAID level you prefer by setting the switch on the back panel.

- RAID 0 – Striping (Recommended for higher performance)
- RAID 1 – Mirroring (Recommended for data security)

**STEP 1**



**WARNING:** Changing RAID level will erase all of your data stored in N2050. Make sure you back up all your data before the operation.

Plug in the power cord and turn on the system.

**STEP 2**



After you turn the system on, you will need to press and hold the INIT button to initialize the system. The N2050's LEDs will blink once, and you can then release the INIT button. If you don't notice the LEDs blinking, press the INIT button for 10 seconds and then release. After you release the INIT button, the LEDs will blink again and the N2050 will go into ready mode (refer to the LED chart for LED descriptions).

You will need to press the INIT button when:

- a) it is the first time you are using the N2050,
- b) you are using two new hard drives, or
- c) you have not changed the hard drives, but have changed the RAID level

Please note that if you do not use the INIT button to initialize the system, it will not be functional. The first time you start to use N2050, or you have just changed the RAID setting, RAID creation will start immediately. It takes only several seconds to create the RAID. When RAID creating process finishes, HDD 1 Power LED and HDD 2 Power LED will be glowing blue.

For USB port connection, connect the included USB cable to N2050 and your PC's USB port.

**STEP 3**

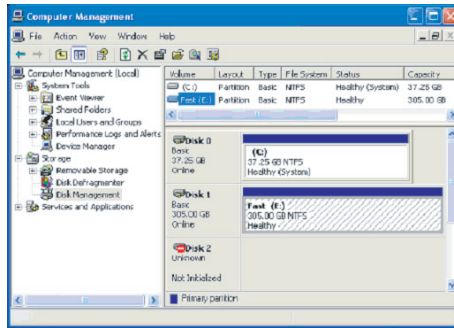


For eSATA connection, connect the include eSATA cable to N2050 and your PC's eSATA port.

**Warning:** Depending on hot plug support of SATA interface on your computer, we recommend shutting down your computer before plugging or removing the SATA cable.

Partition and Format the hard disk drives using your Windows File Manager.

**STEP  
4**



NOTE: If you see an Unknown disk in your disk manager, this is normal. This means that your motherboard supports SATA port multiplier.

NOTE: If you are not using new hard drives or you have just changed the RAID level, please delete the previous partition and create new partition again.

Start to enjoy your N2050.

### Steps to rebuild RAID 1

If you are using RAID 1 and one of the hard disks fails, you will see a notification on the front panel LED (refer to the LED chart). To rebuild the RAID 1 array, follow the steps below:

1. Turn off the N2050
2. Replace the failed hard drive.
3. Turn on the N2050.
4. The Power LED and Activity LED of the replaced hard drive will blink alternately for a while as the system checks its status.
5. The rebuild process will start automatically (refer to the LED chart).
6. When the rebuild process is done, both the Power LEDs will glow.

### Steps to change RAID setting

1. Turn off the power to N2050.
2. Change the RAID level by using the switch on the back panel.
3. Turn on the power to N2050.
4. Press and hold the INIT button to initialize the system.
5. RAID building process will start.
6. Follow step 4 in "Setup & Connect the N2050" to partition and format your N2050.

### Contact Information

For additional information or troubleshooting help, you can e-mail for further support.

E-mail Support	<a href="mailto:support@thecus.com">support@thecus.com</a>
Website	<a href="http://www.thecus.com/">http://www.thecus.com/</a>
Sales information	<a href="mailto:sales@thecus.com">sales@thecus.com</a>