

The logo for Thecus, featuring a stylized red and grey swoosh that forms a partial circle around the word "Thecus".

Thecus®

DLM2 (Download Manager 2)

Quick User Guide v1.0

2010/1/29

Table of Contents

| | Page |
|-------------------------------|-------|
| 1. What is DLM2?..... | 3 |
| 2. Getting started..... | 4 |
| 3. BT | 5-8 |
| 4. EMule..... | 9-11 |
| 5. HTTP/FTP..... | 11-12 |
| 6. About this user guide..... | 13 |

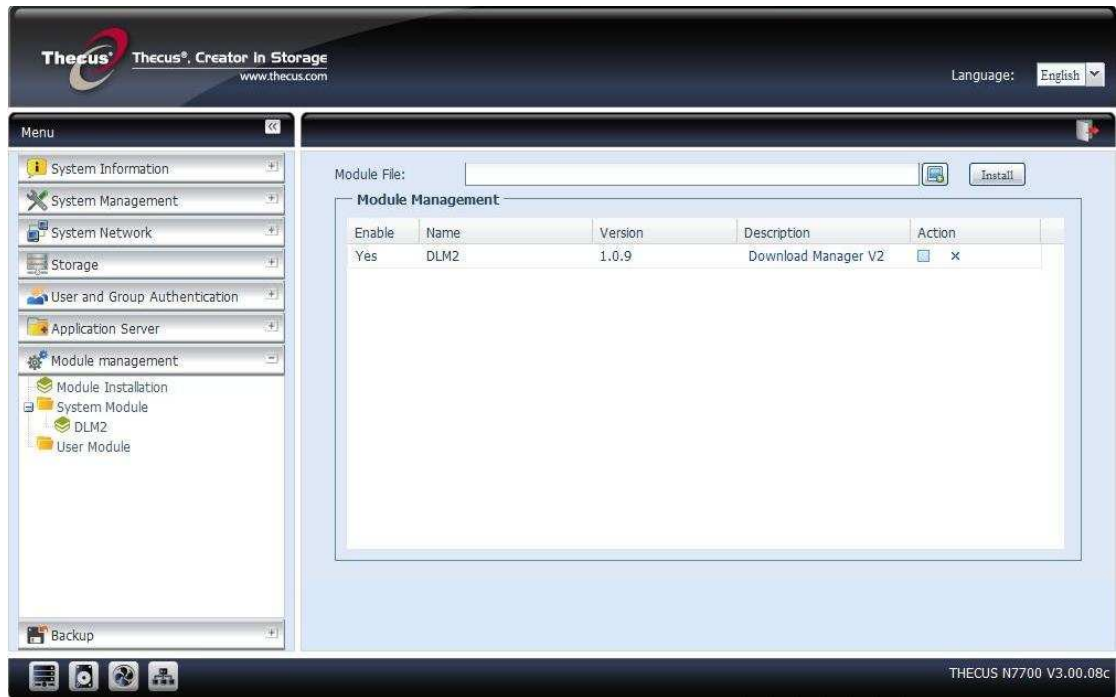
1. What is DLM2?

DLM2 (Download Manager 2) is a module dedicated to the task of downloading files with different download utilities such as BitTorrent, eMule, and HTTP/FTP client. It is designed to give users greater control over downloads. With DLM2, users can download files directly from the internet and store them on Thecus NAS devices without the need turn on their PC, saving time and money.

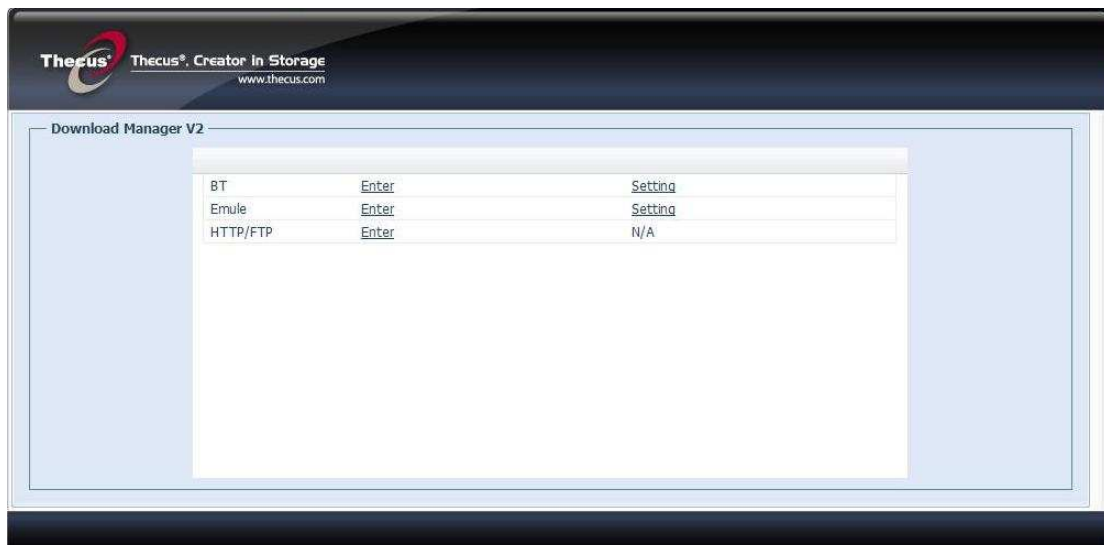
Thecus Download Center provides you another BT module, Transmission. Feel free to use [Transmission Module](#) as your BT client.

2. Getting Started

After installing the DLM2 module on your Thecus NAS, please click on **DLM2** under **Module Management > System Module** in the Web UI.



The **DLM2 Main Page** should appear as below:



3. BT (BitTorrent)

Note: Thecus Download Center provides you another BT module, Transmission. Feel free to use [Transmission Module](#) as your BT client.

Step 1- Configuration

Click on “**Setting**” on the **DLM2 Main Page** to enter the **BT Configuration Page**.

The screenshot shows the BT Configuration interface. At the top left is the Thecus logo and text: 'Thecus® Creator In Storage www.thecus.com'. The main area is titled 'BT Configuration'. It contains several input fields and a dropdown menu. The 'Download Folder' field is empty. The 'Torrent Range' is set to '9000' followed by a tilde '~' and '9200'. The 'Upload Rate Limit' is '11000'. The 'Download Rate Limit' is '-1'. The 'Max Uploads' is '-1'. The 'Max Connections' is '-1'. A dropdown menu labeled 'P2P_Download_' is set to 'P2P_Download_'. At the bottom left of the configuration area are two buttons: 'Save' and 'Main Menu'.

On this page, you will see the following options:

Download Folder: Select the folder to store the downloaded files.

Torrent Range: 9000~9200 is the default Torrent Range.

Upload Rate Limit: Set the maximum speed limit when uploading files.

Download Rate Limit: Set the maximum speed limit when downloading files, it is set to -1 by default which means no limit.

Max Uploads: Set the limit of files to be uploaded.

Max Connections: Set the limit on total connections allowed, both download and upload.

Next, please click on “**Save**” to confirm your settings and click on “**Main Menu**” to return to the **DLM2 Main Page**.

Step 2 - Setup New Session

On the **DLM2 Main Page**, click on “**Enter**” next to the word “**BT**” and the **Setup New Session Page** will appear as below.



Welcome to webBTG!

Attach to session

If there are any sessions available, you can select a session here and attach to it.

Setup new session

If you'd like to setup a new session, enter default seed limit (how many % we should seed before we stop) and/or default seed timeout (how long time we should seed before we stop). Both can be empty, in which case you have to stop your torrents by your self, or one of them can be used, in which case that condition will be used, or both can be used, and the first reached will be used.

Encryption , DHT , Seed limit: % , seed timeout minutes

webBTG version 1.1

On the page you will see below options:

Attach: Attach multiple session function has been disabled; only one session can be created.

Encryption: Tick to hide the source provider

DHT: Tick to enable DHT support

Seed limit%: Set the maximum limit of the downloading file for others to upload.

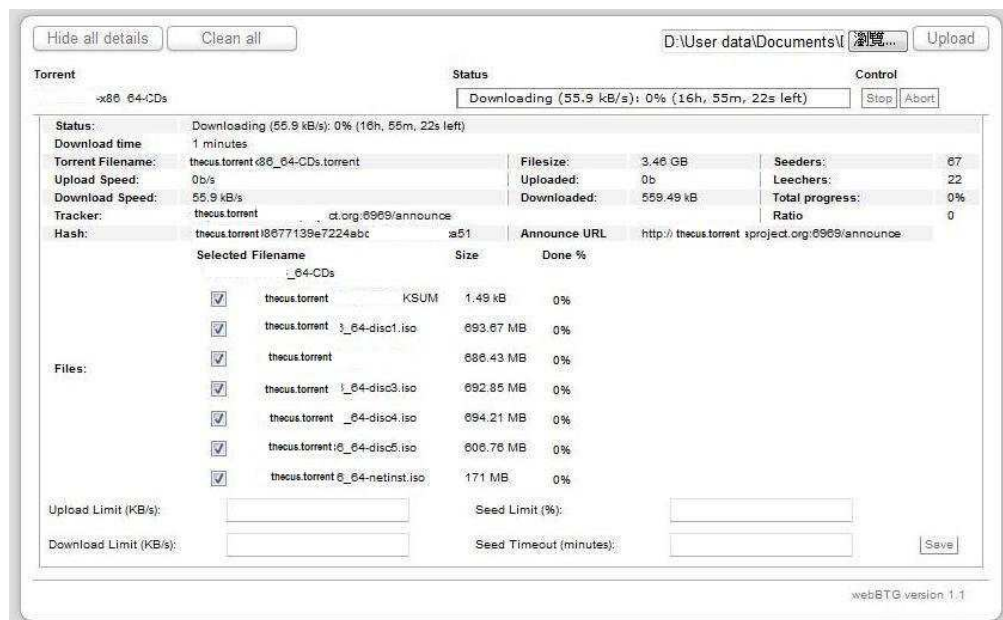
Seed timeout minutes: Set the timeframe to discontinue download task if the seed does not respond or when errors have occurred.

*The **Setup New Session Page** will only display once for configuration purposes, it will not display again next time you enter BT from Web UI.

Next, please click on “**Setup**” to enter the **BT Download Control Panel**.

Step 3- Add New BT Download Tasks.

The **BT Download Control Panel** should appear as below:



To add new BT download tasks, simply click on the **“Browser”** button on the top right hand corner to insert the torrent file and click on the **“Upload”** button to initiate the task.

Once the task starts, you may click on the file name under the word Torrent to display detail information on the download task and various setting options.

Please see below descriptions on the buttons and options:

Buttons:

Browser: Click to add torrent file

Upload: Click to start download task

Hide all details: Hide detail information on the download task

Clean all: Clean all completed download tasks

Start: Start download task

Stop: Pause download task

Abort: Cancel download task permanently

Refresh Now: Refresh download task status

Stop update: Discontinue page from updating information

Settings:

Upload Limit (KB/s): Set maximum upload speed limit.

Download Limit (KB/s): Set maximum download speed limit.

Seed Limit %: Set the maximum limit of the downloading file for others to upload.

Seed Timeout (minutes): Set the timeframe to discontinue download task if the seed does not respond or when errors have occurred.

*Once the download task has been completed, the downloaded files will be stored in the designated folder previously selected in the **BT Configuration Page**.

*Please remember to click on the “**Clean All**” button for the system to refresh and transfer all the downloaded files into the designated folder.

4. Emule

Step 1 - Configuration

On the **DLM2 Page**, click on “**setting**” next to the word “**Emule**” to enter the **Emule Configuration Page**:

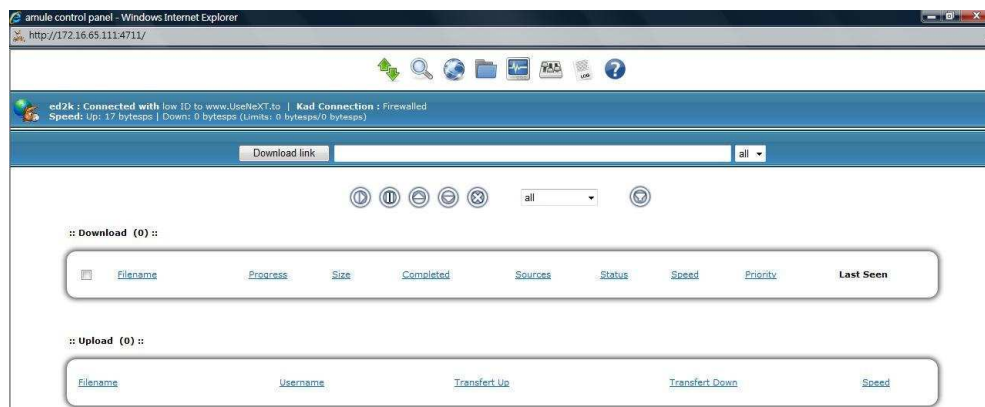


On this page, users can select which folder to store the downloaded files.

Next, click on “**Save**” to confirm and click on “**Main Menu**” to return to the **DLM2 Main Page**.

Step 2 – Setting up Emule

On the **DLM2 Main Page**, please click on “**Emule**” to enter the **Emule Control Panel**. On the panel, there are 8 icons for different settings.



Please see below brief description on each icon.



Download List

Click on this icon to display detail information on the download task



Search Module

On the page, users can search files to download according to various criteria



Server List

Users can connect or disconnect from existing servers or add new server by typing in IP or Address, Port and Name of the server.



Share Files

On this page, users can manage their share files and view detail information on the share files.



Stats

Display detail connection and download task status.



Preference

Set download preference on Emule.



Log

To view system log



Server Info

Detail information on the current server

Step 3 –Add New Emule Download Tasks

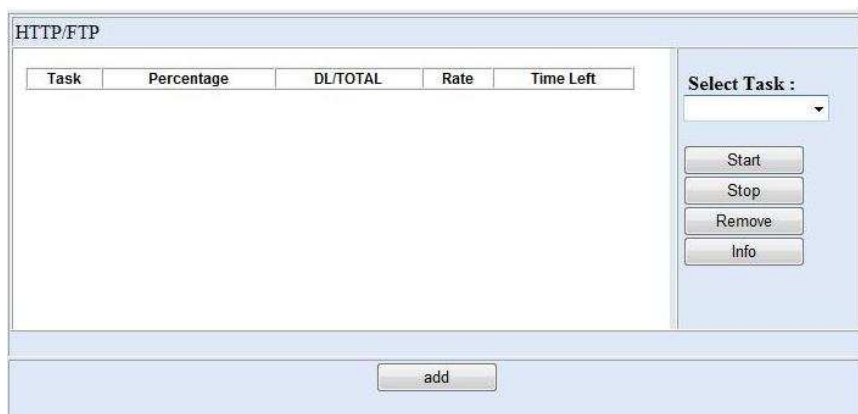
Please click on the “**Download list**” icon to enter the **Emule Control Panel**.

To add new download tasks, simply insert the Emule source file link in the address bar on the centre of the **Emule Control Panel** and click on the “**Download link**” button to start.

5. HTTP/FTP

Step 1- Add New Download Tasks

Back to the **DLM2 Main Page**, please click on “**HTTP/FTP**” to enter the **HTTP/FTP Control Panel**.



To add new download tasks, click on the “**add**” button situated below the **Control Panel**, the **add task** page should appear as below:

To add a new download task, simply insert in the Http:// or ftp:// link in the “**File Link**” field.

“**Connection**” - users to split the download file up to 4 small files to increase download speed.

“**Folder**” – select the folder to store the downloaded files.

Next, please click on “**Apply**” to complete adding tasks and click on “**Return**” to go back to the **HTTP/FTP Control Panel**.

Step 2- Start Download Tasks

To start download tasks, please click on the “**Select Task**” and select the tasks previously added on the **add task page** and click on the “**Start**” button to start.

| Task | Percentage | DL/TOTAL | Rate | Time Left |
|----------------------------|------------|----------------|-------------|-------------|
| N0503upgrade.3.00.08.7.zip | 9.19% | 3812Kb/41491kb | 778.000Kb/s | ETA 00:48 |
| | Connection | Host | Status | Total Bytes |
| - | 01 | ftp.thecus.com | Downloading | 3904146 |

* When errors occurred, users can click on the “**Info**” button to find out more details.

About This User Guide

All information in this User Guide has been carefully verified to ensure its correctness. For any errors found, please write to us:

marketing@thecus.com

For any violation of intellectual properties found within this user guide, please write to us: marketing@thecus.com

Copyright and Trademark Notice

Thecus and other names of Thecus products are registered trademarks of Thecus Technology Corp.

Copyright © 2009 Thecus Technology Corporation. All rights reserved.