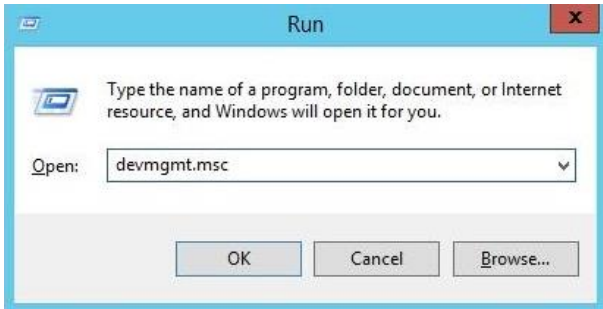


1. If you eject the SD card by using the *“safely remove hardware & eject media”* tab located in the bottom right corner of the windows task bar, you may need to reinitialize the USB controller from Device Manager in order to detect other SD cards that are plugged in thereafter.

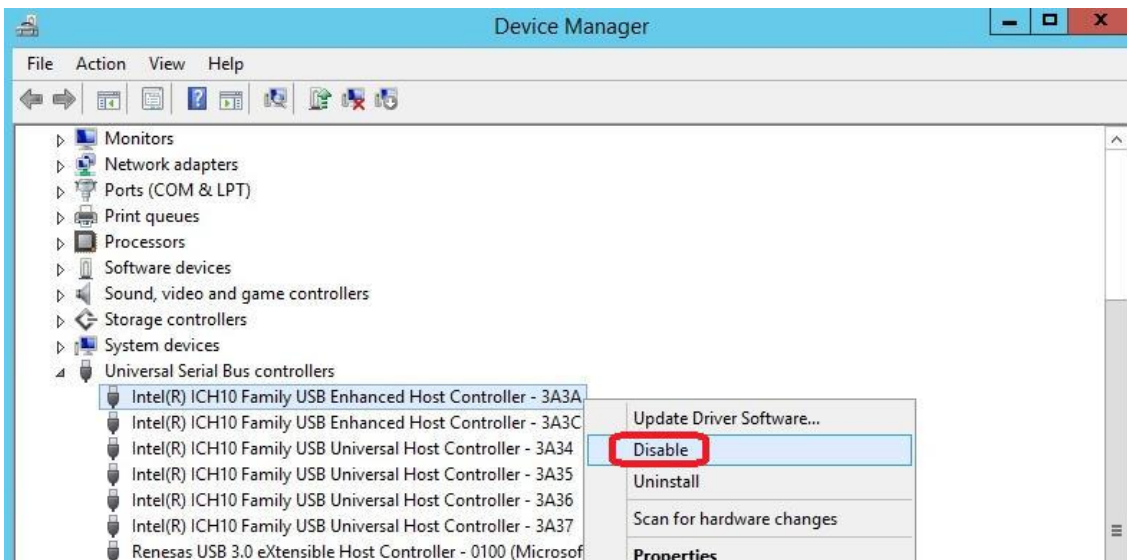
2. Steps:

2.1. Windows key + R => key in **devmgmt.msc** get into Device Manager.



2.2. Open **Universal Serial Bus Controllers**

2.3. Right click to DISABLE **Intel(R) ICH10 Family USB Enhanced Host Controller - “3A3A”**



2.4. Right click to ENABLE again **Intel(R) ICH10 Family USB Enhanced Host Controller – “3A3A”**

