



# How to Use the Thecus Setup Wizard

## Prerequisites

-Your Thecus NAS is powered up and connected to a local network or directly to your computer

## Necessary Tools

-One Thecus NAS



## Applicable Models

-All NAS



Setting up a NAS can be a little bit counterintuitive for people unfamiliar with networking. That's why we've created the Thecus Setup Wizard to automatically find your NAS on your network and walk you through the steps to get it ready for access. This guide works in conjunction with the [How to Access the Thecus UI](#) and [How to Manipulate IP Addresses](#) guides, so don't hesitate to refer to them at any time. This guide will take you step-by-step through the Thecus Setup Wizard and discuss the advantages and suitable situations for different setup options. The Thecus Setup Wizard is for initial setup and can also be used later as a simple tool to find information such as IP and MAC addresses of NAS on your local network. This utility is for local use only.

# Installing the Thecus Setup Wizard

Download the installer from the [Thecus Download Center](#):

- A. Choose your model number.
- B. Choose “Utility”.
- C. Make sure you select the most recent version available for your NAS.
- D. Download for Mac OS X or Windows.

## Download Center

Step1: Select Products or File Type N5500 Utility

Step2: Overview and Download

Type	Utility		
File Name	Setup Wizard		
Version	v2.0.4	Date	2010.10.18
Overview	Setup Wizard. (1U4600, N0503, N4200, N4200PRO, N4200Eco, N5500, N7700, N7700PRO, N7700+, N7700SAS, N8800, N8800PRO, N8800+, N8800SAS, N2200PLUS, N3200PRO, N4100PRO, N5200, N5200PRO)		

Mac OSX Windows

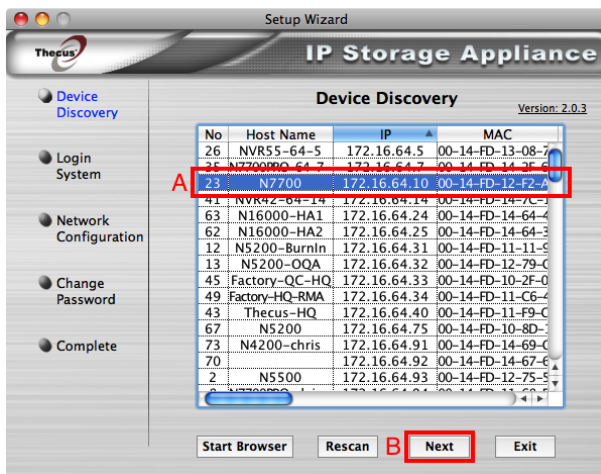
Type	Utility		
File Name	Backup Utility		
Version	v1.0.3	Date	2009.07.15
Overview	• Backup Utility v1.0.3 for Windows • Backup Utility v1.0.0 for Mac OSX  (N199, N1200, N299, N2100, N3200, N3200PRO, M3800, N4100, N4100+, N4100PRO, N4200, 1U4500, 1U4600, N5200, N5200PRO, N5500, N7700, N7700SAS, N7700PRO, N8800, N8800SAS, N8800PRO)		

MacOSX Windows

Once you’ve downloaded the file, simply install the wizard and open it.

## Using the Thecus Setup Wizard

### Step 1 - Device Discovery



If your NAS is set up correctly, it will show up on the list.

- A. Select your NAS. You can set the Host Name in Step 3 or in System Network => WAN/LAN1 in the UI.
- B. Click “Next”. Continue to Step 3 of this guide.

**If your NAS does NOT show up**, make sure it is properly connected to your local network. If it still doesn’t show up, the IP address may be incompatible and **you may want to connect directly to your NAS**. You will need to:

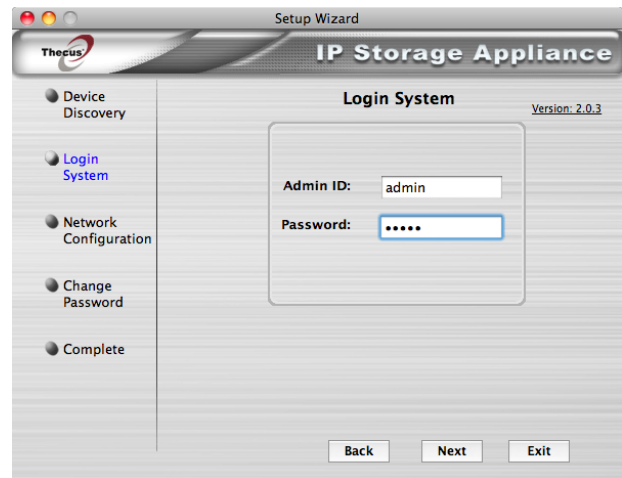
- Change your computer’s IP manually (for example: 172.16.64.1 => 192.168.1.x) to match your NAS’s IP (default = 192.168.1.100 or 192.168.2.254)
- Through the Thecus Setup Wizard or the UI change your NAS’s IP (for example: 192.168.1.100=>172.16.64.x, or use auto/DHCP) to match the network’s (router’s) IP.
- Change your computer’s IP back to the original IP (manually or using auto/DHCP).

For more complete information and directions on IP addresses and accessing the UI refer to the [How to Access the Thecus UI](#) and [How to Manipulate IP Addresses](#) guides.

## Step 2 - Login System

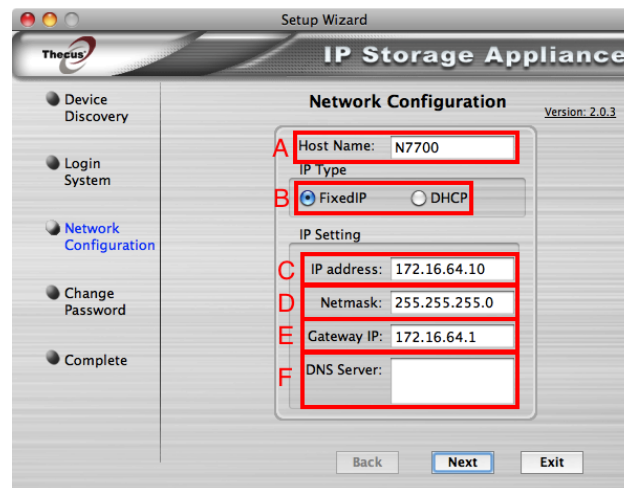
Type in your Admin ID and Password, these are both “admin” by default.

You can your password in Step 4 of this guide or in System Management => Utility => Administrator Password in the UI.



## Step 3 - Network Configuration

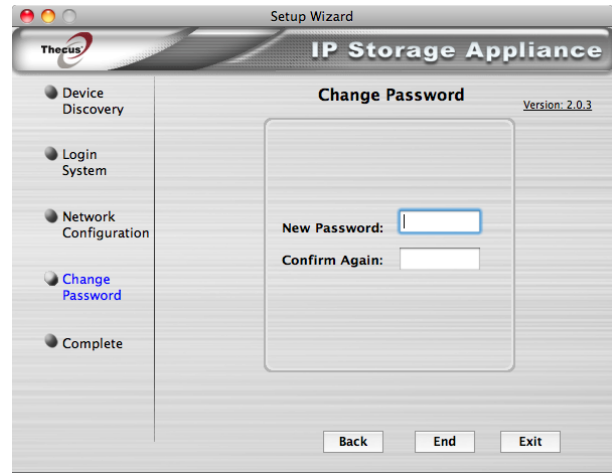
It may be easier to set “DHCP/automatic” for your NAS’s IP address, but this means it will have a new IP address every time it is restarted. It may be better to set a fixed IP, especially for remote access. Read the [How to Manipulate IP Addresses](#) guide for more information.



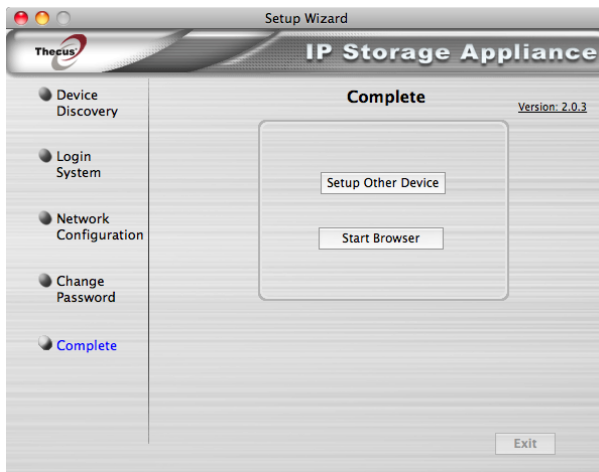
- A. **Host Name** - This is how your NAS is viewed on a network.
- B. **Fixed IP/DHCP** - **Fixed IP** allows you to manually set your NAS’s IP address, **DHCP** allows your NAS to be assigned an IP address from a DHCP server (usually your router).
- C. **IP Address** - Your NAS’s manually set IP address.
- D. **Netmask** - Set as 255.255.255.0 for small networks.
- E. **Gateway IP** - This is generally your router’s IP address.
- F. **DNS Server** - Your DNS Server name, you can leave this blank.

## Step 4 - Change Password

Type in a new administrator password or select “End”.



## Step 5 - Complete



You're done! From here you can choose “Setup Other Device” to go back to Device Discovery, or “Start Browser” to [log into the UI](#).

For any questions regarding this How To Guide, please email us:

[webmaster@thecus.com](mailto:webmaster@thecus.com)

--End--