



How to Take Advantage of Auto Module Installation

Prerequisites

(click links for how-to guide)

-You have upgraded your firmware to 3.04.03 (released 8/31/2010) or above

Necessary Tools

-A Thecus NAS

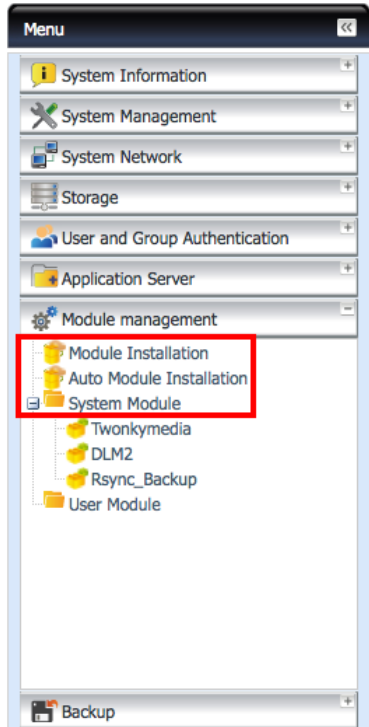
-An Internet connection



Applicable Models

-*The Thecus Auto Module Installation is part of firmware version 3.04.03 and above, which is currently available for the N7700PRO, N8800PRO, N7700+, N8800+, N5500, N4200, and 1U4600 models.

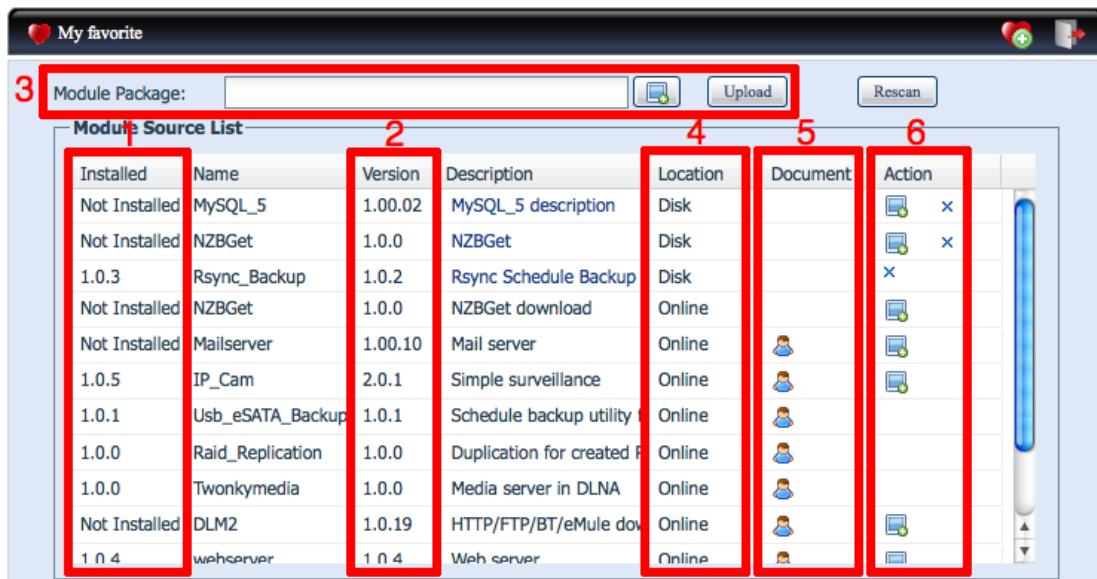
Thecus NAS have many applications for the home and business, and it's very important to make the most of your NAS with modules. Whether you're recording security video, using innovated new backup techniques, or building a home theater, modules provide you with the additional resources and functionality to get the job done. With the new built-in Auto Module Installation system, you now have even greater control over modules and better access to installation features and helpful information.



-For this tutorial you will need to use Auto Module Installation (Step 1), Module Installation (Step 2), and System Module (Step 3) under Module Management in the NAS UI.

Step 1 - Installation: Select Auto Module Installation

-The Module Source List gives you all the information and accessibility you need.



1. See whether the module is installed or not and what version you are currently running.
-Any modules that are installed will list their current installed version.
2. See whether your currently installed version is up-to-date.
-If your currently installed version (1) and the newest version available (2) are not the same, you can choose to update your module in the action column (6)
3. **FOR OFFLINE USERS** - Upload .zip module packages (NOT individual modules, those are manually installed from Step 2 - Module Installation) from the Thecus Universal CD that came with your NAS or another disk.
-Usually it is unnecessary to use anything but the modules available online, but in a situation where there is no internet access you can easily upload .zip module packages from a disk.
4. See whether the module is online or on your hard drive.
5. View helpful documentation about the module, including user guides and release notes.

6. Install, update, or delete your modules.

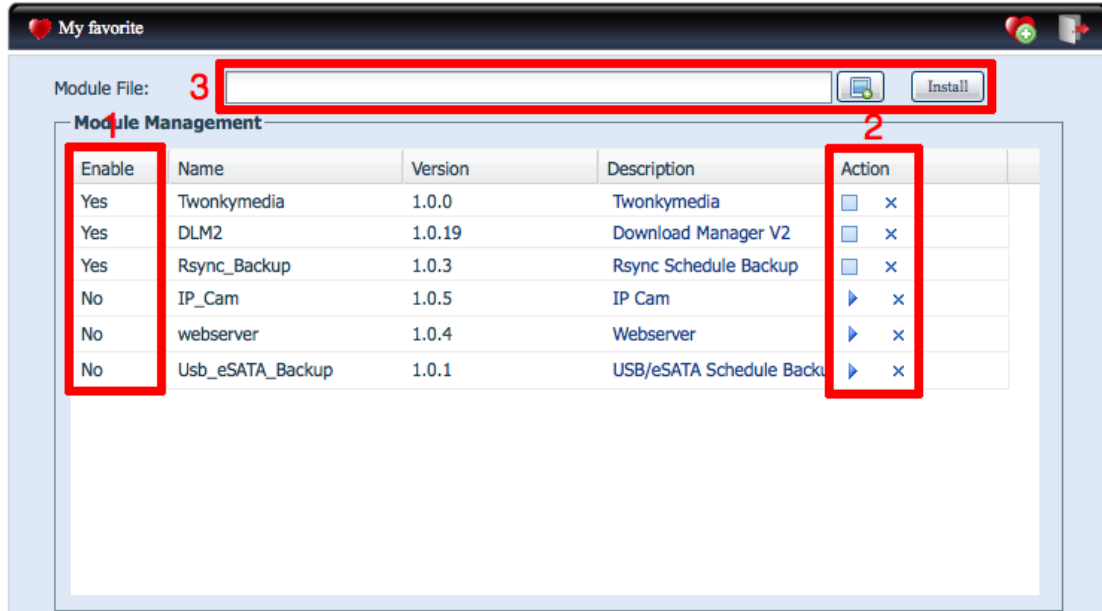
-If a module isn't completely updated, it will give you the option to install in the Action column.

-If a module is saved on your NAS, you can delete the file at any time by clicking the (x).

-This is NOT uninstalling, see below for uninstalling instructions.

Step 2 - Enabling: Select Module Installation

-Enable or uninstall your modules with Module Management



1. See the status of your installed modules.

2. Click the square to disable, click the arrow to enable, click the x to uninstall.

-Since modules use very little in the way of resources, it is generally unnecessary to disable or uninstall modules unless you have a specific reason.

3. You can also install modules one-by-one from files downloaded from Thecus.com, but this system was replaced by Auto Module Installation and is not necessary.

Step 3 - Using: Once you have installed and enabled your modules, select them from the Menu under System Module and you're ready to get started!

For any questions regarding this How To Guide, please email us:

webmaster@thecus.com

--End--