



How to Mount an ISO File on Thecus NAS

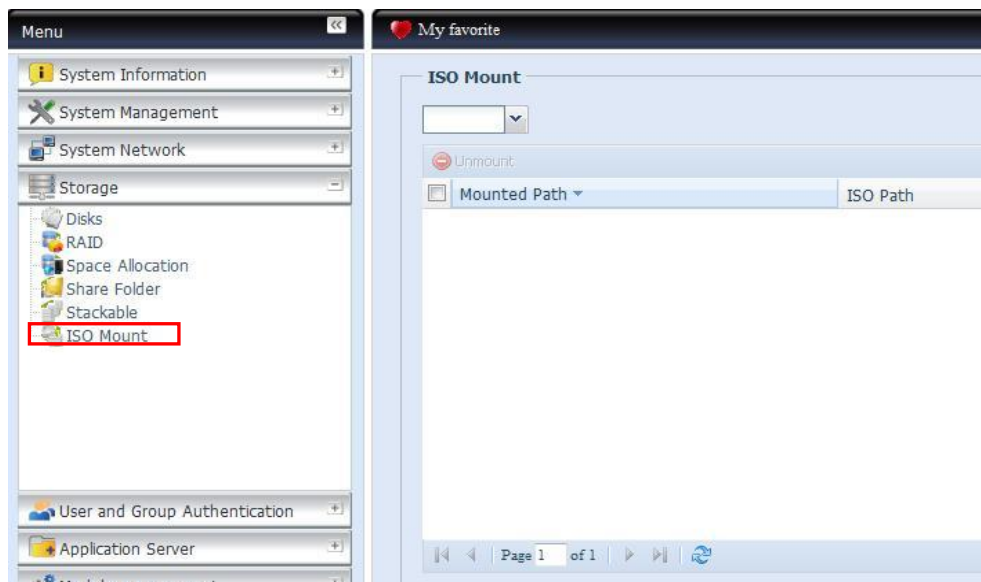


The ISO Mount feature is currently supported on Thecus' complete range of NAS products. The ISO mount feature allows users to store and mount up to fifty ISO 9660 image files on their Thecus NAS. Once an ISO image file has been mounted,

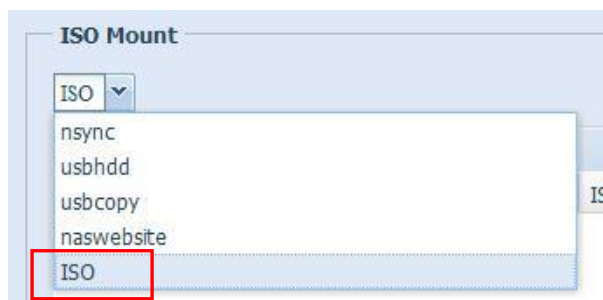
the system will automatically create a new folder and all the files contained in the ISO image file will be extracted and stored in that particular folder. Users can then access these files at anytime without the need to use third party software to extract them.

Part .1 Mounting ISO file on Thecus NAS

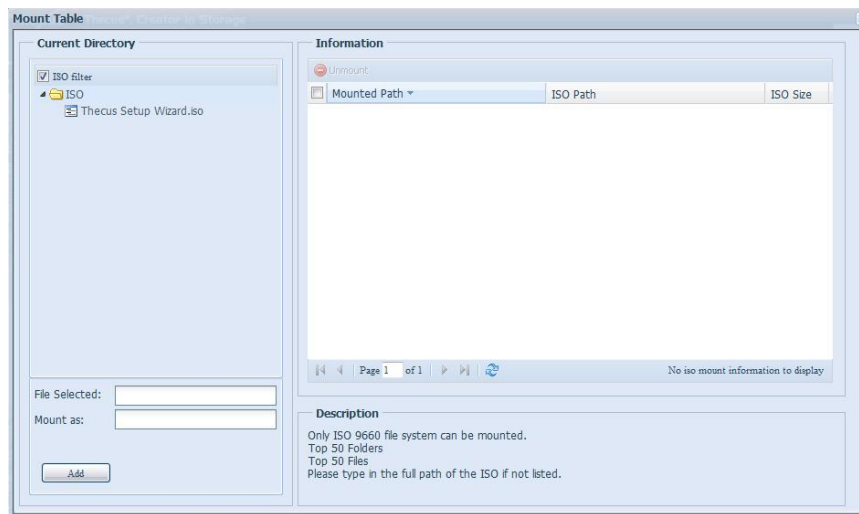
1. In the Web GUI, click **Storage> ISO Mount** to open the **ISO Mount** window.



2. From the drop down list, select the folder containing the ISO files. Here, we will select folder named **“ISO”**.

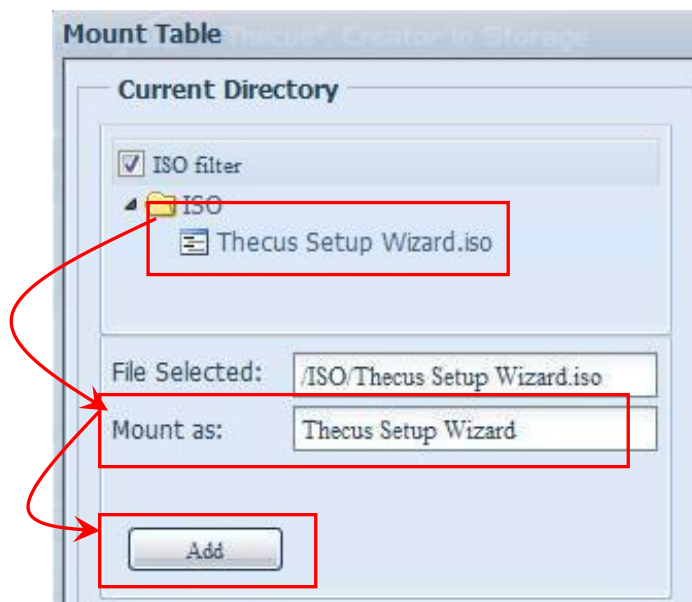


3. After selecting the folder, the **Mount Table** window should appear automatically as below:



4. The available ISO files will be displayed under the current directory. Select the ISO file you wish to mount and type in a name in the **Mount as field**, then click on the **Add** button to continue.

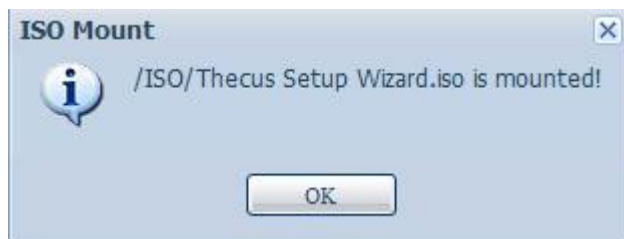
* If **“Mount as:”** is left blank, the system will create a mount point using the ISO file name.



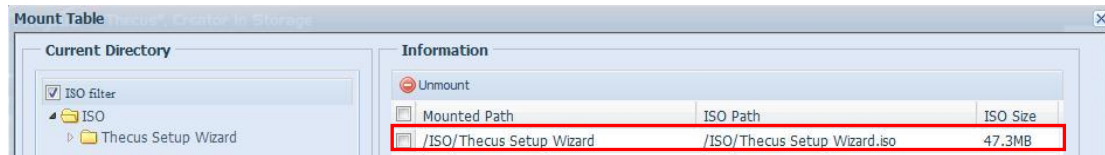
5. A new window will appear. Click **Yes** to proceed.



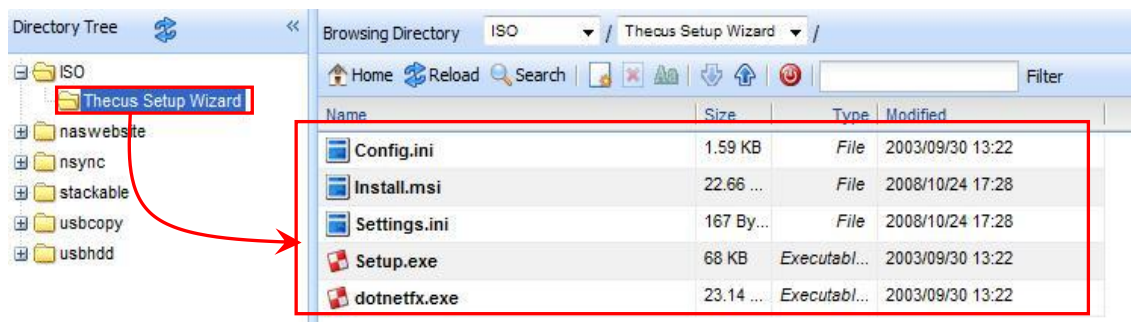
6. A new window will appear showing that the ISO file has been successfully mounted. Click **Yes** to proceed.



7. The **Mounted Path**, **ISO Path** and **ISO Size** of the mounted ISO file will now appear on the **Mount Table**.

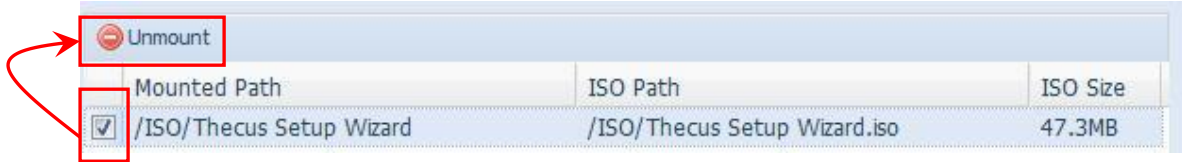


On the Web disk, you can see that the files contained in the mounted ISO file are now opened in a new folder with the name given in **Part 1, Step 4 (Thecus Setup Wizard folder)** . Please refer the screenshot below.

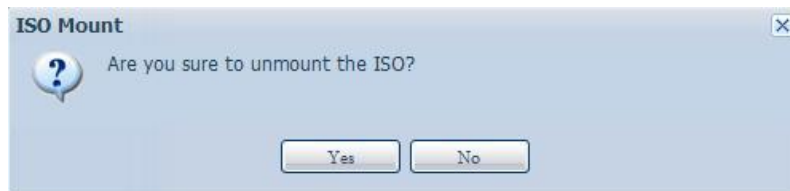


Part .2 Unmount ISO file

1. To unmount ISO files, simply tick in the check box next the ISO file you wish to unmount in the **ISO Mount** page and click on the **Unmount** button.



2. A new window will appear. Click **Yes** to confirm.



For more Thecus How-to guides, please go to:

[Thecus Classroom](#)

For any questions regarding this How-to Guide, please email us:

webmaster@thecus.com

Copyright © 2011 Thecus Technology Corporation. All rights reserved.