



# How to Access the Thecus User Interface, Web Disk, and Photo Server

## Prerequisites

(click links for how-to guide)

- Your Thecus NAS is powered up and connected to a local network or directly to your computer
- [Your computer's, NAS's, and router's IP Addresses are set up correctly](#)

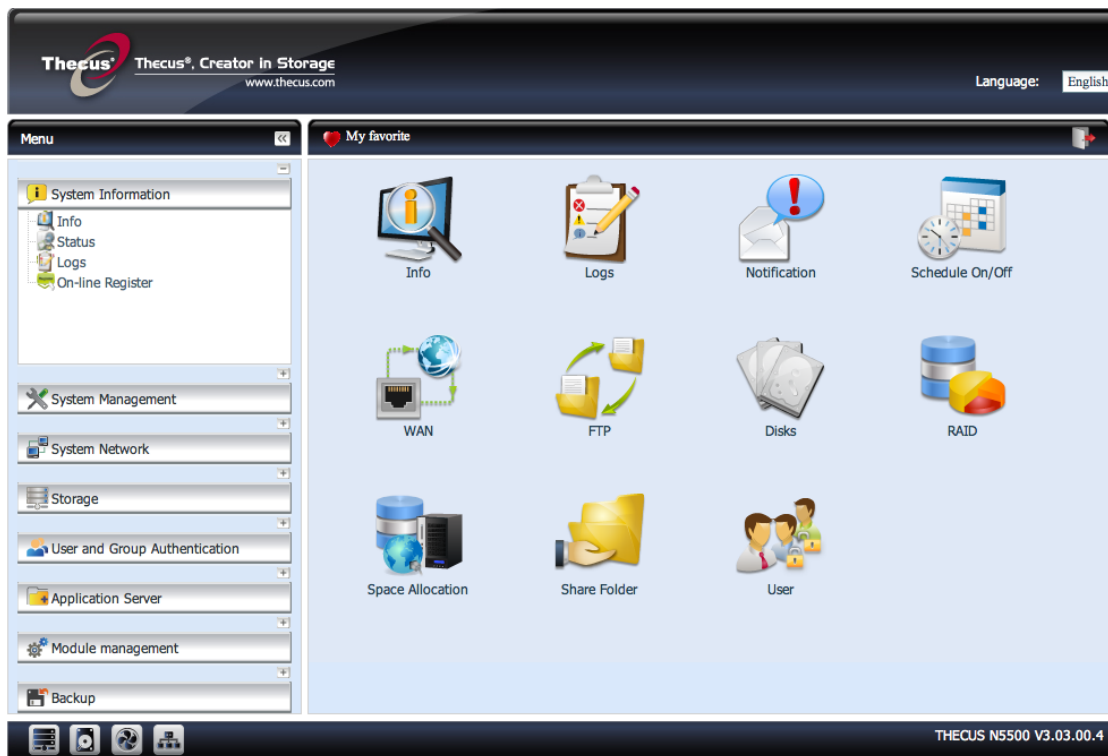
## Necessary Tools

- One Thecus NAS



## Applicable Models

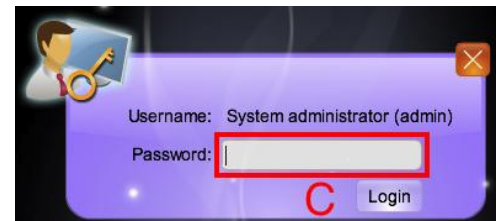
- All NAS



The Thcus User Interface (UI) is your hub for controlling and setting up every aspect of your NAS, the Web Disk is an easy way to access the files in your NAS, and the Photo Server allows you to upload and share photos with friends. The AJAX-based Thcus UI is where users set up and operate nearly every function on their NAS including RAID, many types of backup methods, shared folders, additional functions through modules, user authentication and passwords, networking options and many others, and is the first thing you need to access to set up your NAS. This how-to guide will take you step by step through the process of connecting to the UI, Web Disk, and Photo Server.

## Logging into the UI

Once you have hooked up your NAS and are sure the [IP addresses are matching](#), open up your web browser.



- A. Enter your NAS's IP address in the address bar.
- B. Select Thecus UI, Web Disk, or Photo Server
- C. Enter your username (default: admin) and password (default: admin)

If you are having difficulty connecting to your NAS, it may be that the IP addresses are incorrectly configured. To learn more about this go to [How to Configure Your IP Address](#).

For any questions regarding this How To Guide, please email us:  
[webmaster@thcus.com](mailto:webmaster@thcus.com)