



# Installing and Using Dropbox

## On Thecus<sup>®</sup> OS6

---

## ❖ Overview

---

- Creating a user account 3
- Installing the module 4
- Enabling the Dropbox login menu 5
- Accessing the Dropbox module menu 7
- Tips 12

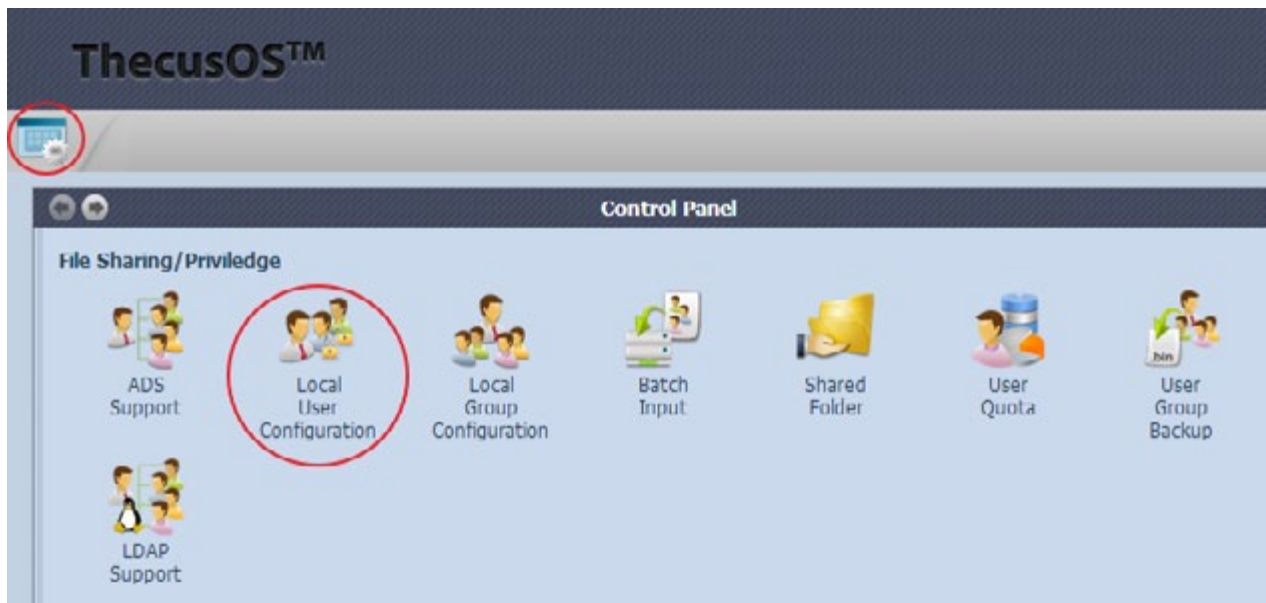
Before installing and using the Dropbox module, there needs to be at least one user account on Thecus®OS6. If you have already created a user account, please skip section 1.

You will also need to have already set up a Dropbox account.

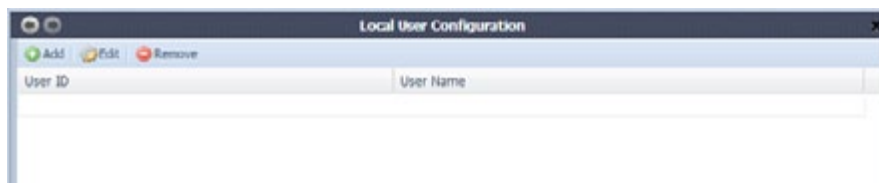
## ❖ Creating a user account

Log into Thecus® OS6.

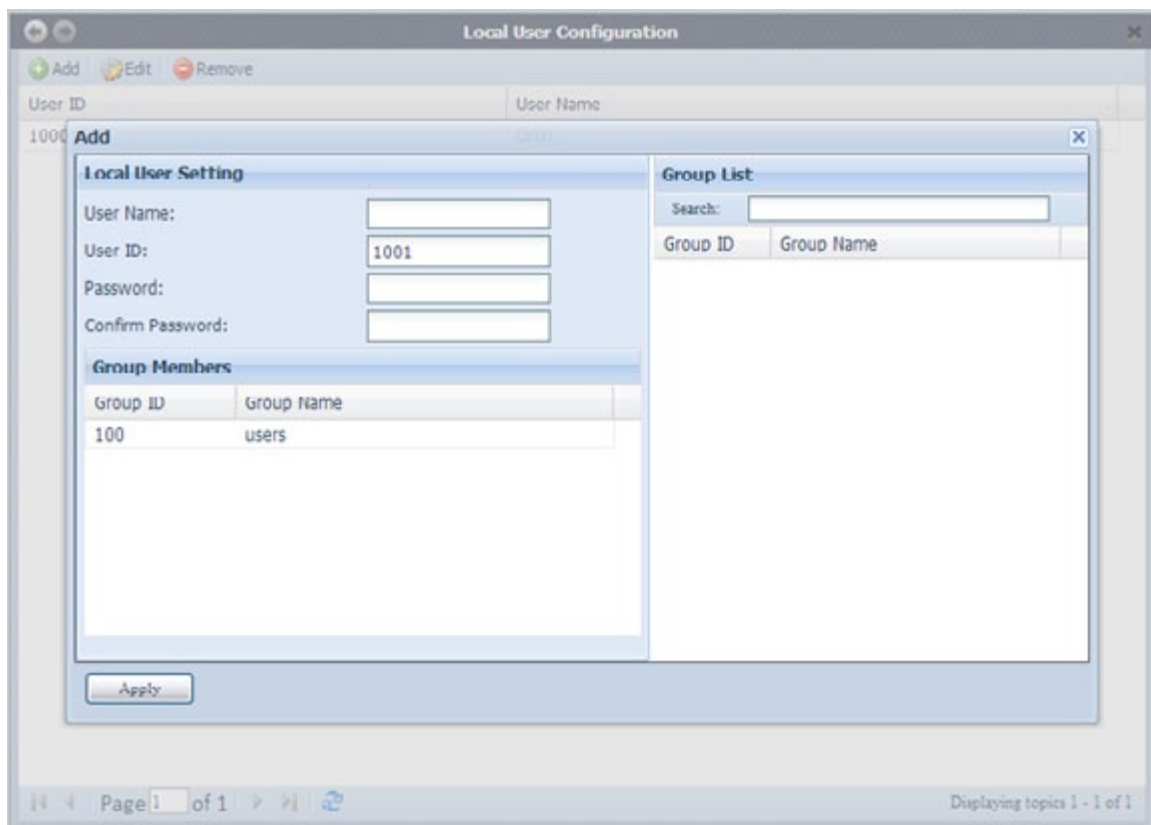
Click on the Control Panel icon in the top left hand corner of the UI.



Once in the Local User Configuration menu, click on the Add button.

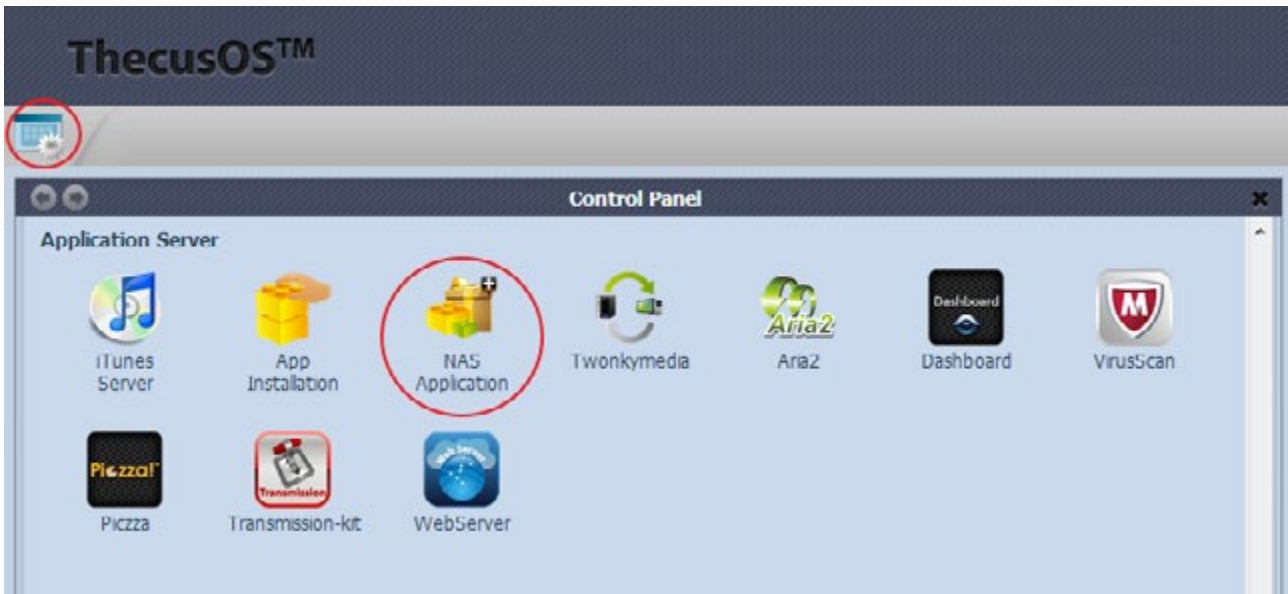


Fill in the user's details and click Apply.

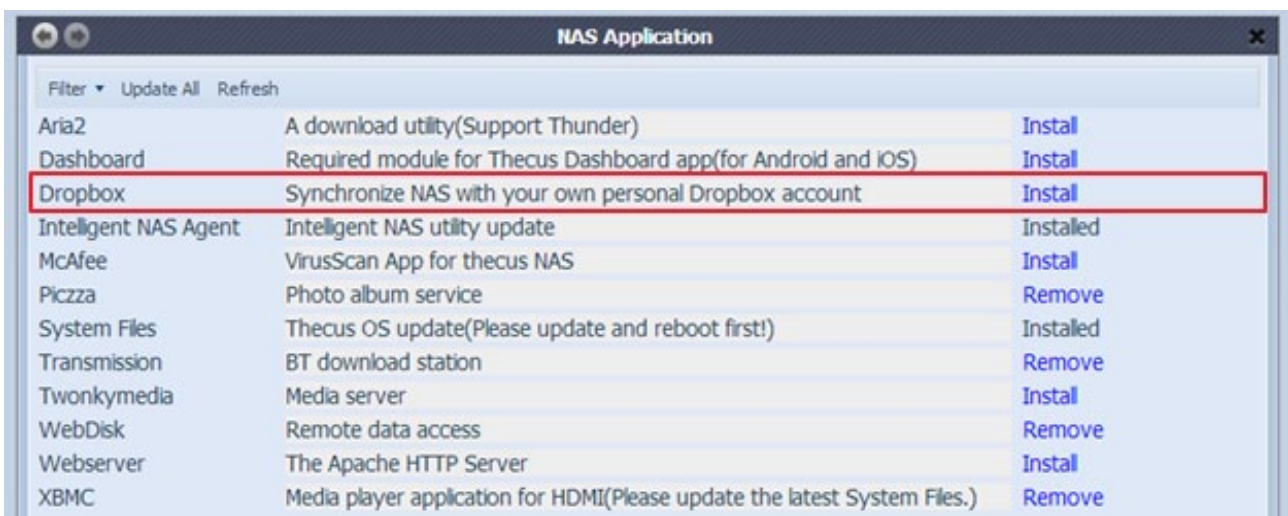


## ❖ Installing the module

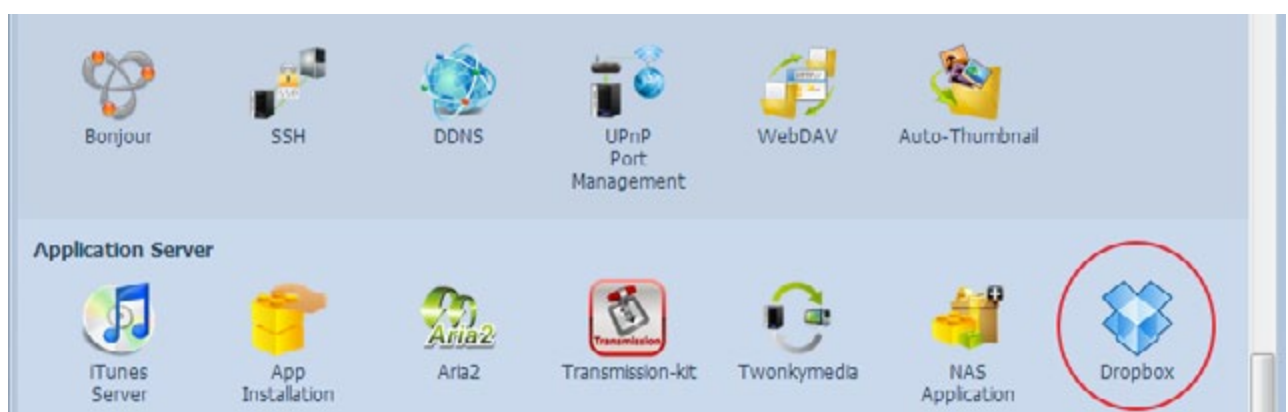
Return to the Control Panel and Scroll down to the Application Server section. Click on the NAS Application icon.



Inside the NAS Application menu, install the Dropbox module.



Once successfully installed, a Dropbox icon should appear in the Application Server section.

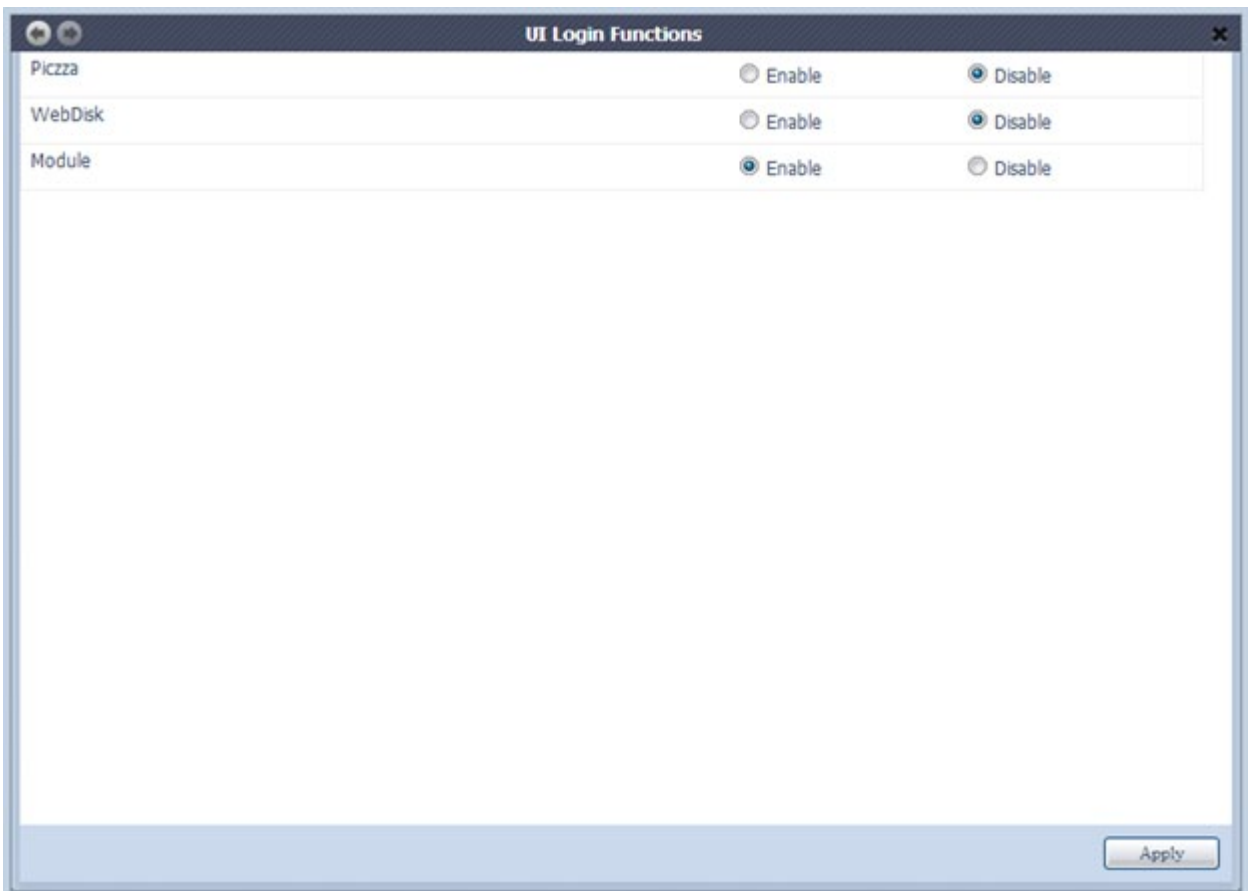


## ❖ Enabling the Dropbox module login menu

In the Control Panel, scroll up to the System Management section. At the bottom of the first column, click on the UI Login Functions icon.

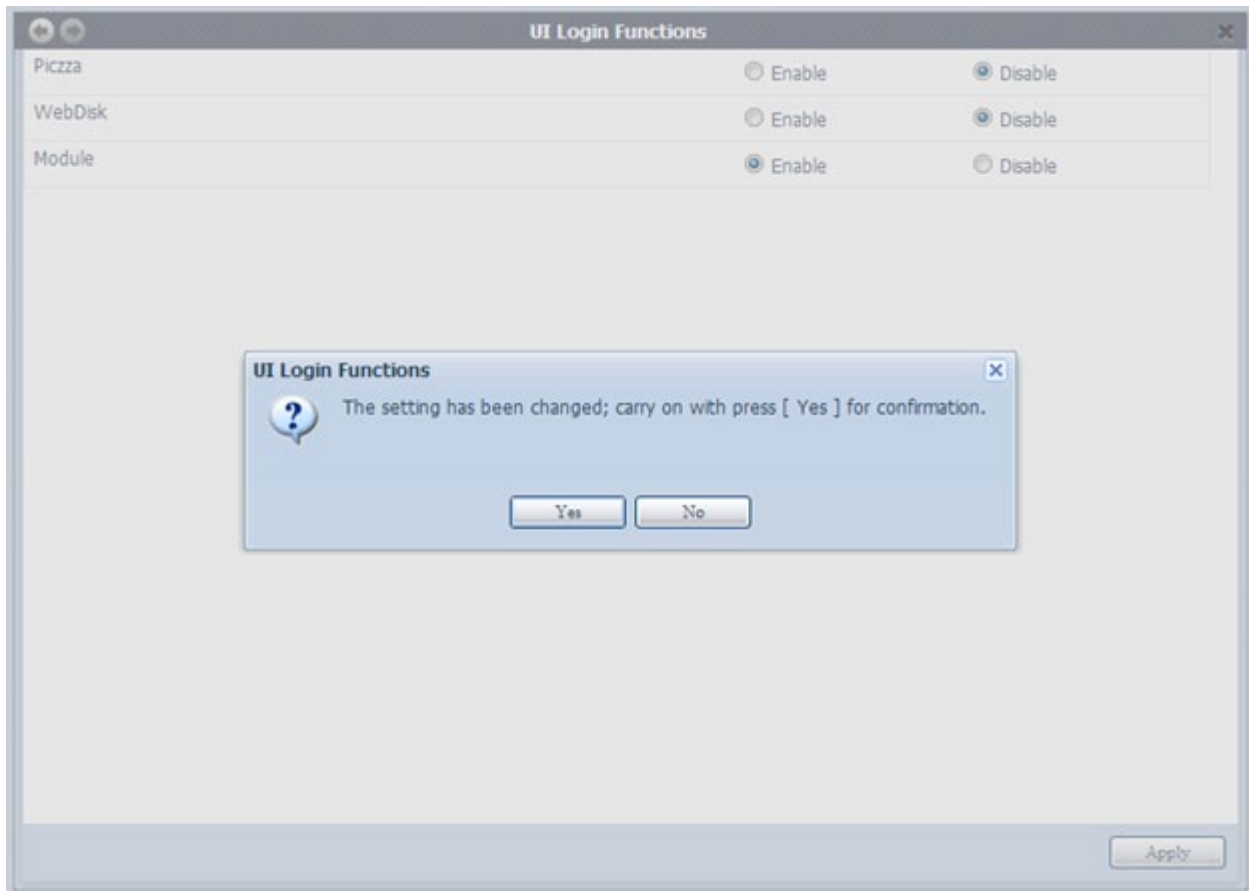


Inside the UI Login Functions menu, enable the Module option and click Apply.

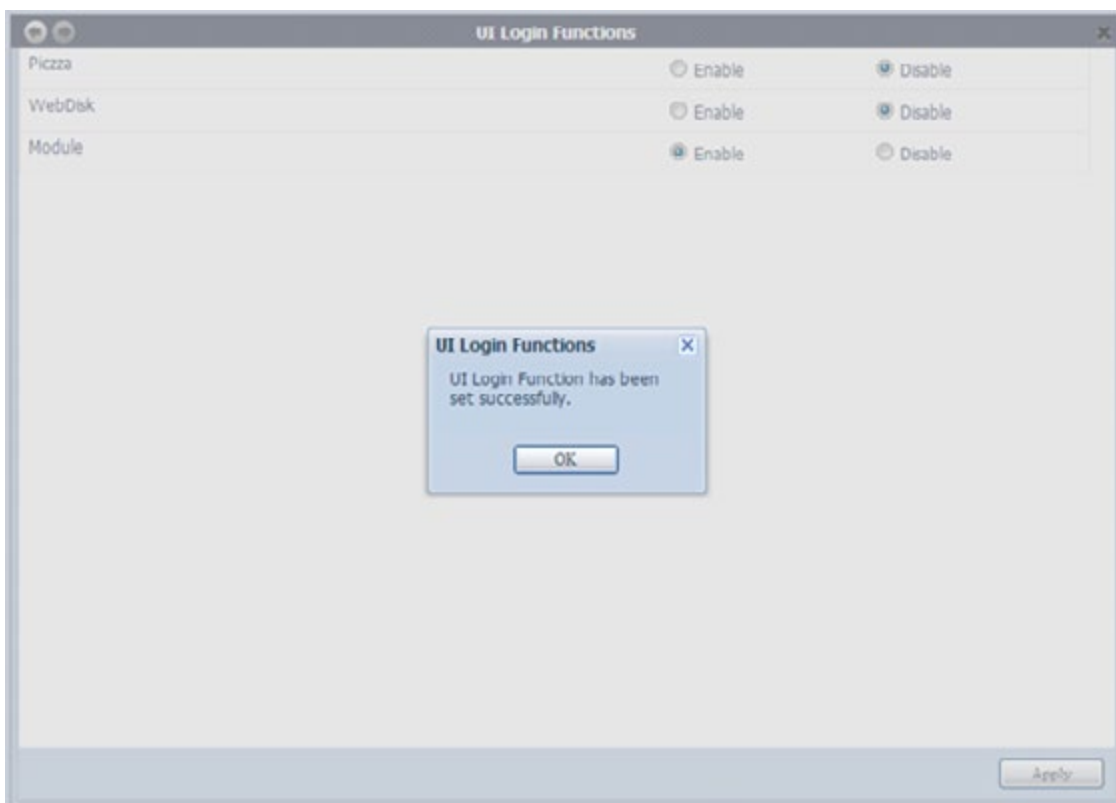


## ❖ Enabling the Dropbox module login menu

Click Yes on the confirmation popup

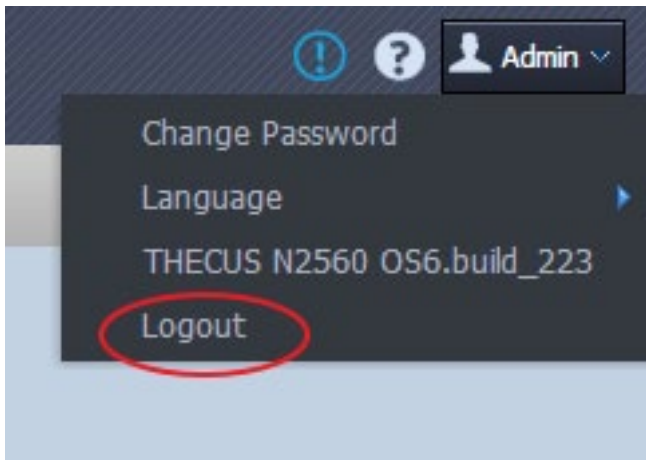


Click OK once the setting has been successfully changed.



## ❖ Accessing the Dropbox module' s settings menu

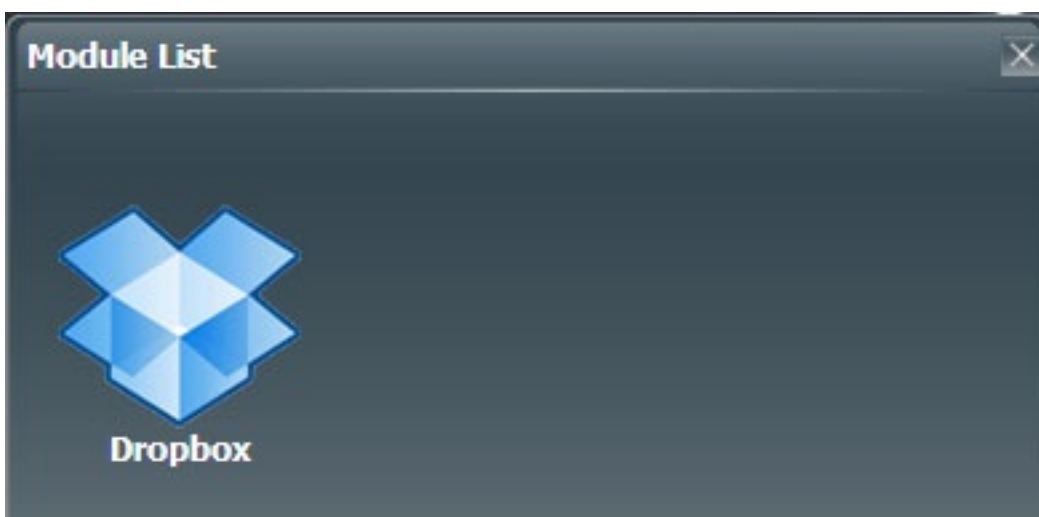
Logout of Thecus®OS6.



Click on the Module Login button that you just added.



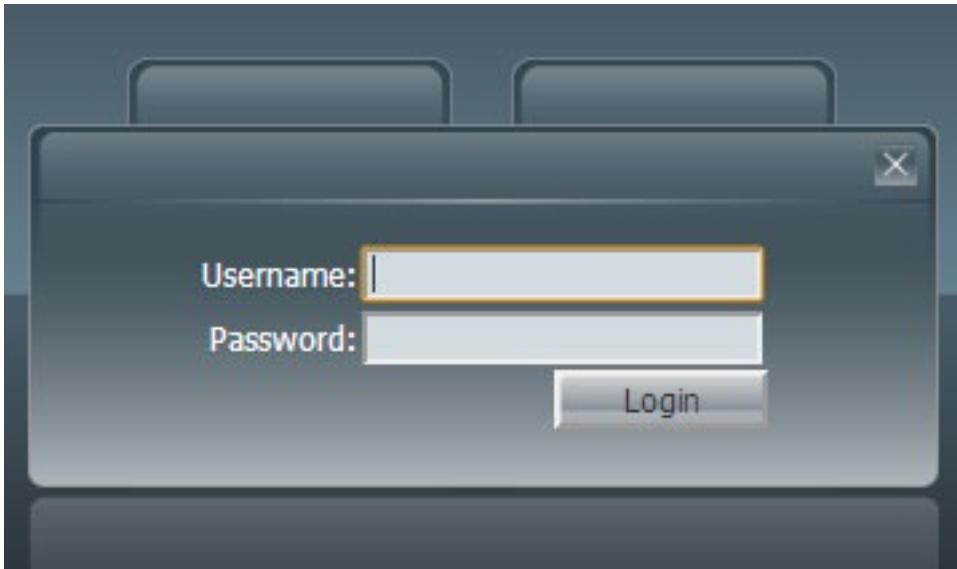
Now select Dropbox.



## ❖ Accessing the Dropbox module' s settings menu

---

You will then be prompted for your NAS username and password.



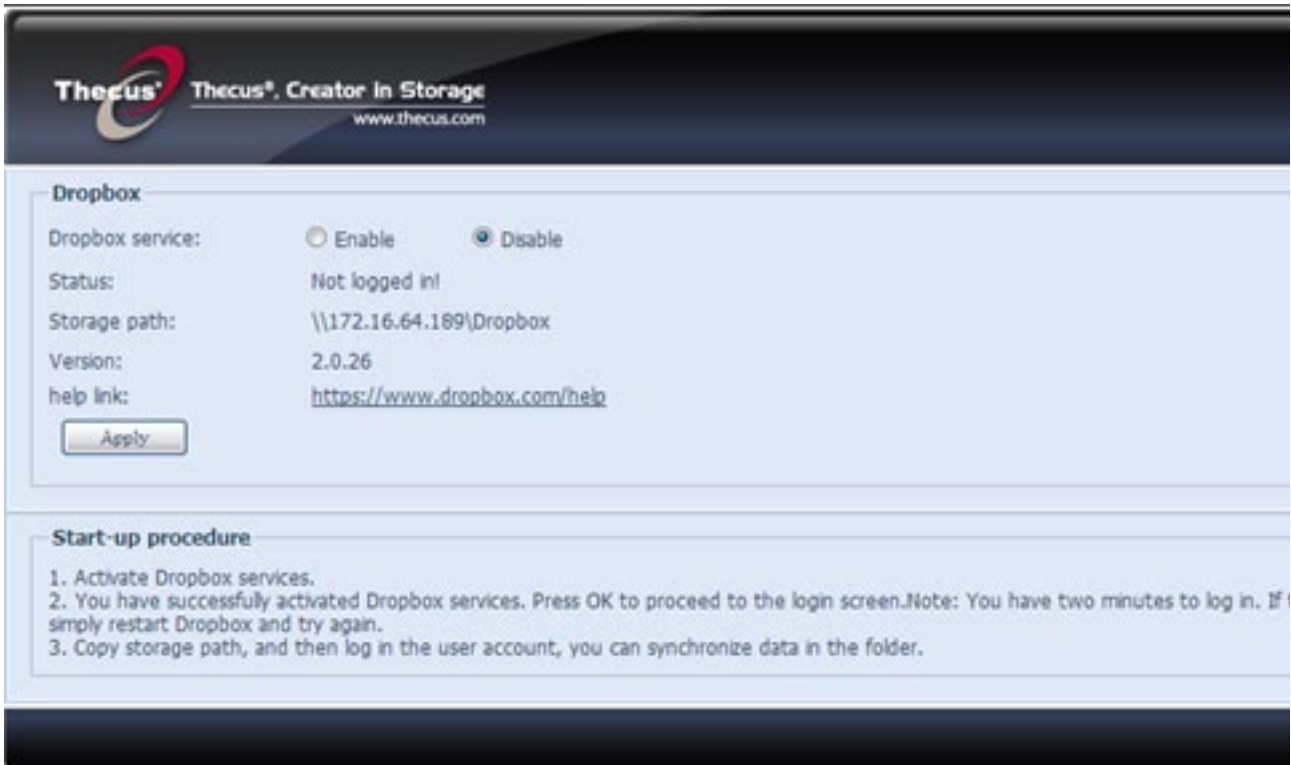
To ensure that the Dropbox menu popup appears, please make sure that your browser' s popup blocker is disabled.



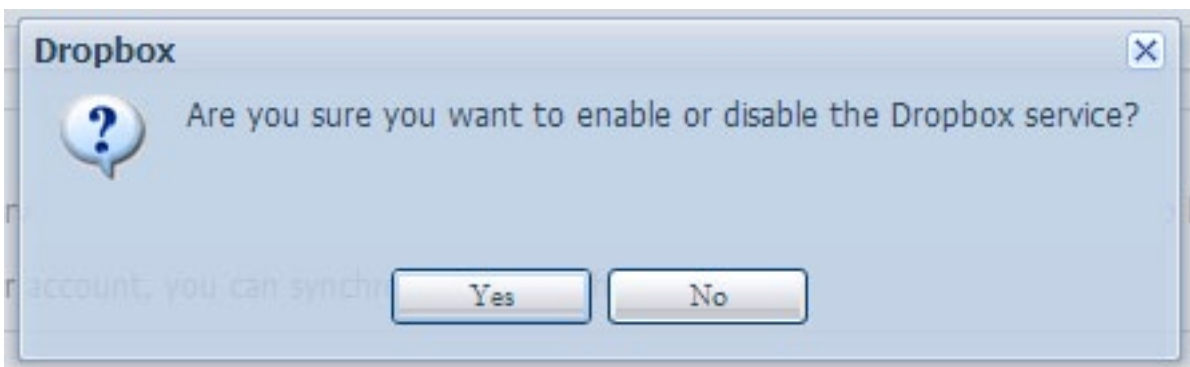


## ❖ Accessing the Dropbox module' s settings menu

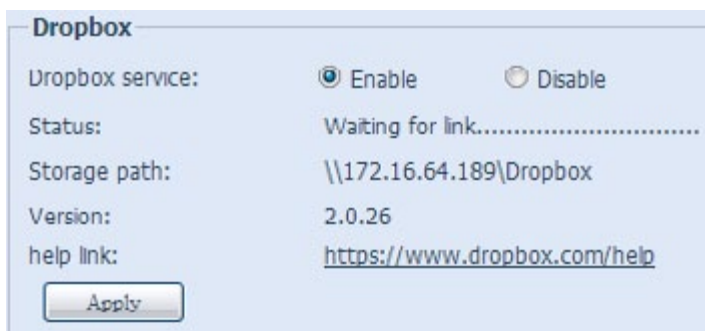
You will then be prompted for your NAS username and password.



To ensure that the Dropbox menu popup appears, please make sure that your browser' s popup blocker is disabled.

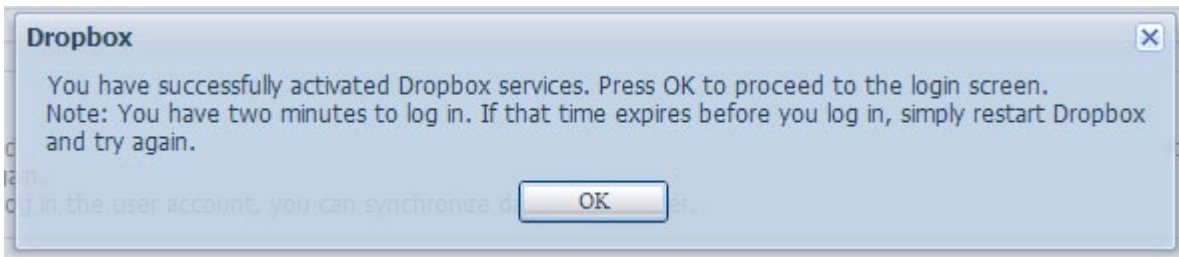


The Dropbox module will then attempt to establish a link to Dropbox.



## ❖ Accessing the Dropbox module' s settings menu

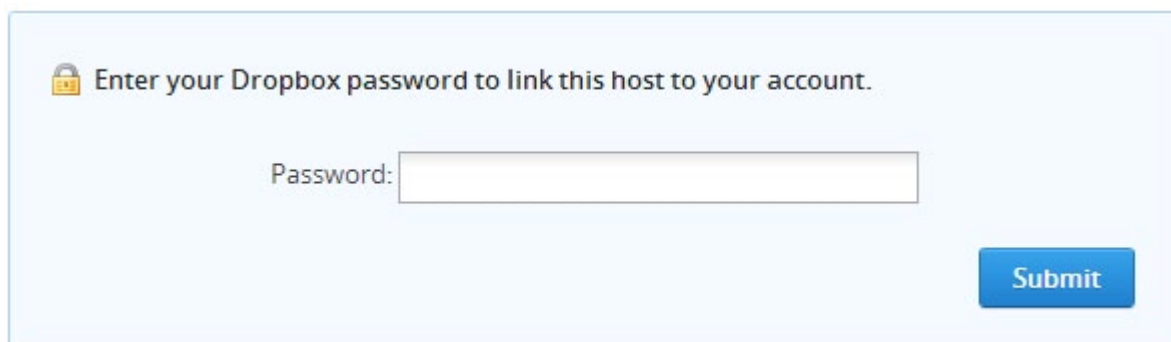
Once a link has been established and the Dropbox services successfully activated, you will have two minutes to log into Dropbox (see the next step).



A window will pop up and you will be prompted to log into Dropbox.



You will need to reenter your Dropbox password so as to link your NAS to your Dropbox account.

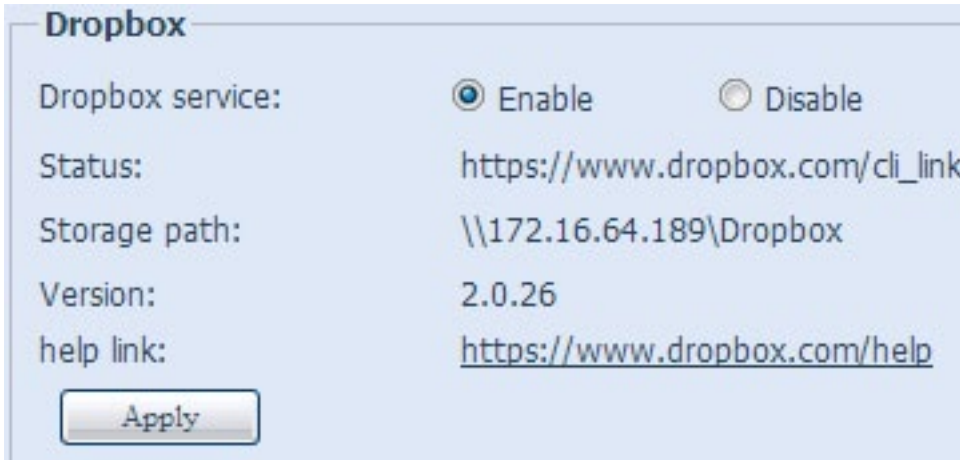


Once you have done this, you will receive the following success confirmation.

Your computer was successfully linked to your account.

## ❖ Accessing the Dropbox module' s settings menu

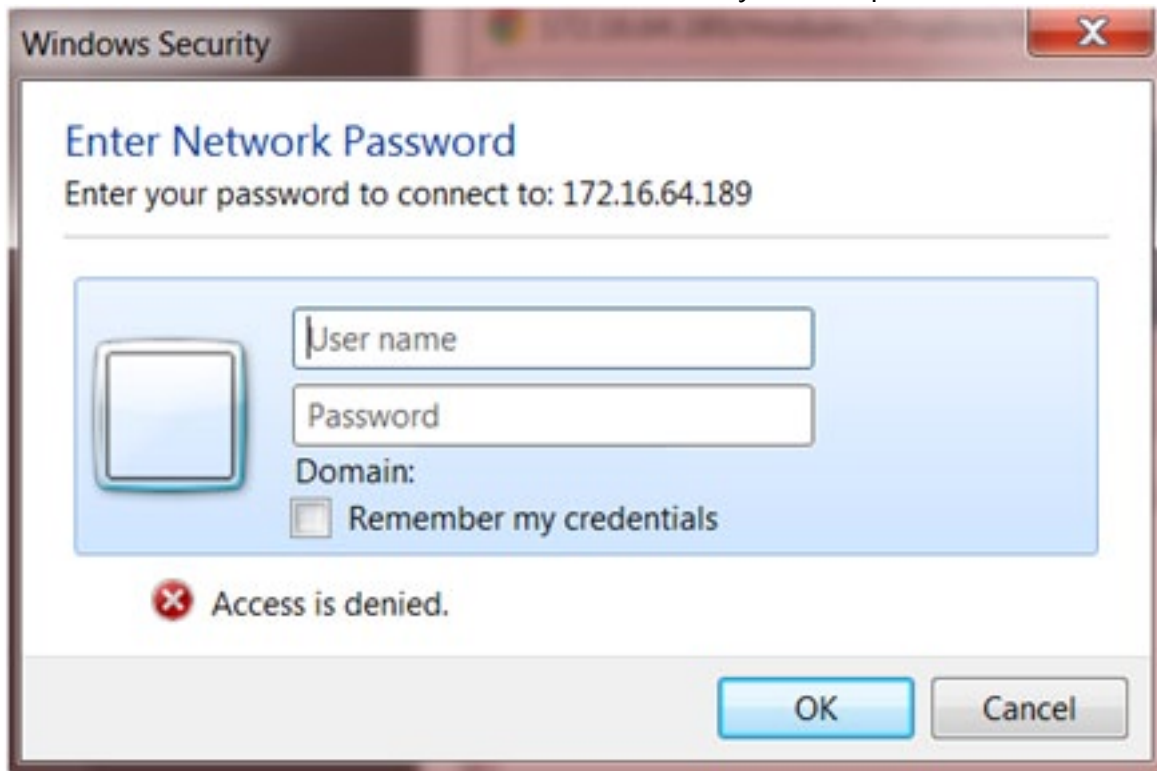
Your Dropbox menu will now contain information similar to the image below.



You can now browse to your NAS' s Dropbox folder (its path is displayed in the Dropbox menu above).

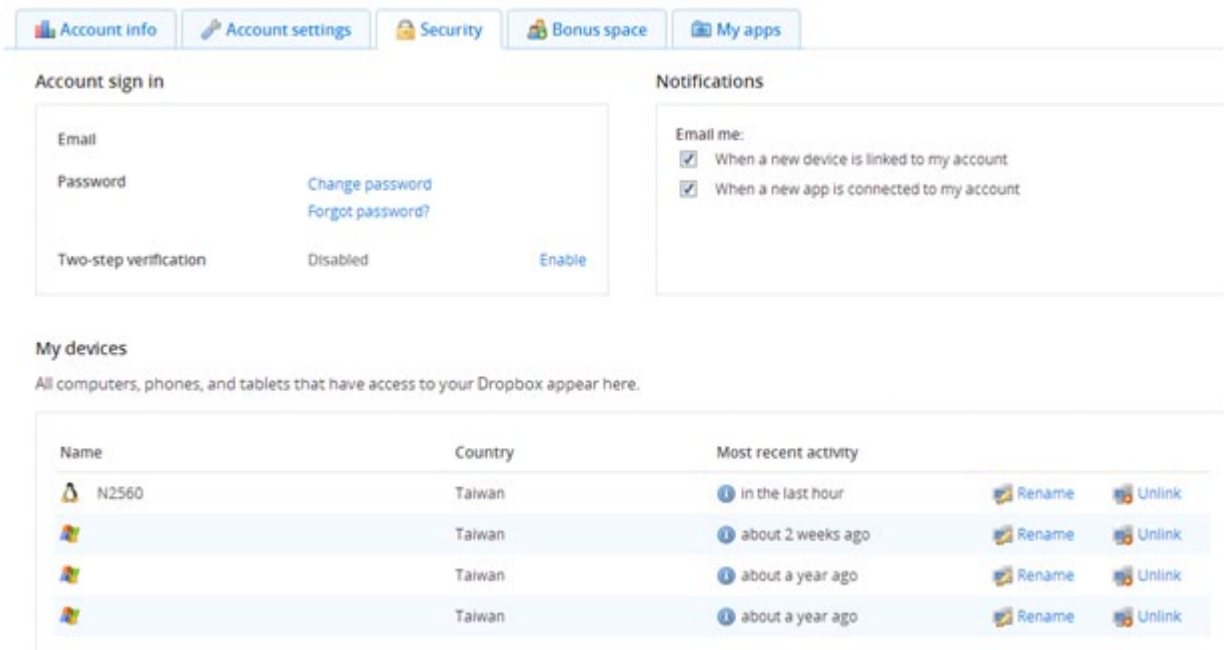
When attempting to access this folder, you will be prompted to provide your NAS username and password.

You can now use this folder as you would a regular Dropbox folder: Every file that you add or delete here will be added or deleted from your Dropbox account.



## ❖ Tips

To unlink your Dropbox account, log into the Dropbox website and go to the Security menu. Find the machine you wish to unlink and click Unlink.



To get the best performance out of your Thecus® NAS, always make sure your firmware is up-to-date. To do this, make sure that no updates are waiting for your System Files in the NAS Application menu.

