

N5810PRO

**Superior Performance,
Unmatched Security with Built-in Mini-UPS**



TAIWAN
EXCELLENCE 2017



System Failover
Uninterrupted Accessibility



Snapshot Backup
Easy Recovery with Snapshots



Built-in Mini-UPS
Contingency Power Supply



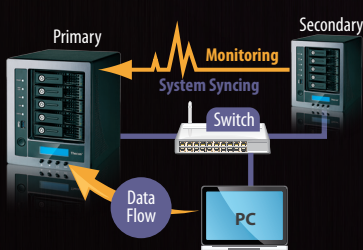
Disk Clone and Wipe
100% Data Wipe, Rock-Solid Security



VPN Server
Secure Remote Access

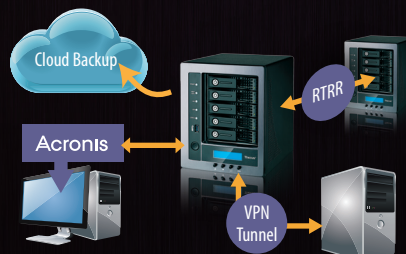


Link Aggregation
5 LAN for Network Performance Improvement



SYSTEM REDUNDANCY

Uninterrupted Accessibility with
Thecus System Failover



COMPLETE BACKUP & SECURITY

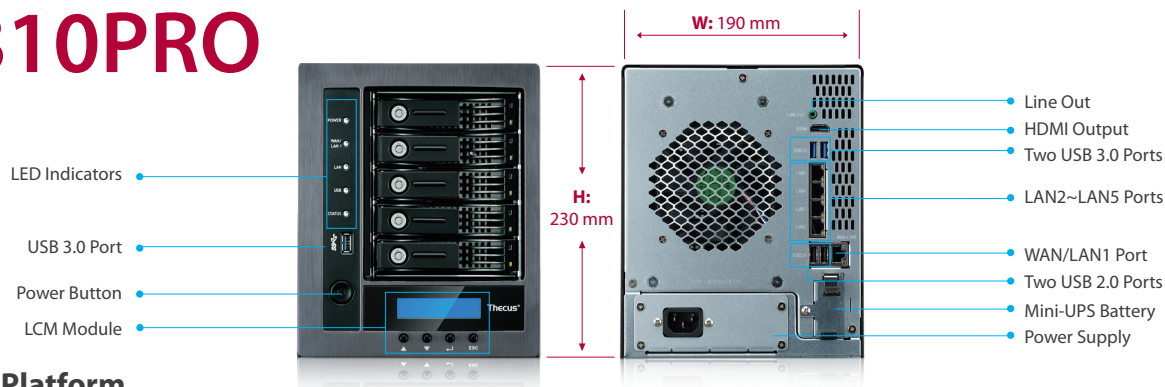
DropBox/ElephantDrive/Amazon S3
Bundled with Free Acronis® and Antivirus
Real-time Remote Replication (RTRR)



ENTERTAINMENT ENABLED

Multimedia Playback via HDMI Output
Mobile Connection via T-OnTheGo™
Plex Media Center

N5810PRO



Hardware Platform

Processor

- Intel® Celeron™ J1900 (2GHz Quad-Core)

System Memory

- 4GB DDR3

LAN Interface

- RJ-45x5: 10/100/1000 BASE-TX Auto MDI/MDI-X
- WOL supported

USB Interface

- USB 2.0 host port x2 (back x2)
- USB 3.0 host port x3 (front x1, back x2)

LCM Module

- LCM display
- 4 buttons (ENTER, ESC, UP, DOWN)

HDMI Output

- HDMI port (back x1)

Audio

- Line output (back x1)

Disk Interface

- 5 x SATA for internal, support SATA II / SATA III hard disk

Power Supply

- 130W Internal Power Supply

Thermal/Fan control

- Thermal sensor on processor temperature

System Clock

- Battery-backed up system clock

Power Management

- Auto power on after shutdown due to power loss

Lithium-ion Battery

- Built-in battery backup module (Mini-UPS)

Buttons

- Power button
- LCM button

Buzzer

- Adjustable frequency alarm

Environment

- Temperature: 0°C to 40°C (Operation)
-40°C to 70°C (Non-operation)
- Humidity: 0 ~ 80 % R.H. (Non-condensing)

Chassis

- 5bays Tower Metal Chassis

Dimensions (HxWxD)

- 230 x 190 x 240 (mm)/ 9.06 x 7.48 x 9.45 (in)

Weight

- 5.46 (Kgs)

Certificates

- CE/FCC/C-Tick/VCCI/BSMI
- RoHS
- WEEE

Software Functions

RAID

- RAID Modes: RAID 0, 1, 5, 6, 10 and JBOD
- Auto-rebuild: Supported
- Hot-swap: Supported
- Hot Spare: Supported
- RAID Level Migration: Supported
- RAID Expansion: Supported
- RAID Volume Encryption: AES256bit

Disk

- Power Management:
Available spin-down while idle setting
- Bad Block Scan: Supported
- SMART Info: Supported
- SMART Test: Supported
- Disk Roaming: Supports volume-based roaming to other Thecus NAS (Require ThecusOS 7 64 bit)
- Disk Wipe and Clone: Supported
- Disk Security: Supported

Network

- Configuration: Fixed IP address, dynamic IP address
- Transport Protocols: TCP/IP/Appletalk
- File Protocols: SMB/CIFS, HTTP/HTTPS, FTP, NFS v4, AFP
- Link Aggregation: Load balance, Failover, 802.3ad, Balance-XOR, Balance-TLB, Balance-ALB, Broadcast
- TCP/IP: IPV6 & IPV4
- DDNS: Supported
- SSH: Supported
- UPnP: Supported
- UPnP Port forwarding: Supported
- Bonjour: Supported
- VPN Server: Supported
- vLan: Supported

System status

- System Monitor: Monitoring CPU, memory, network utilization and protocols access user count
- Syslog Management:
 1. Send syslog to assigned location
 2. Act as syslog server to receive log info from other systems

Data Access

- Client OS Support:
Windows XP and after
Windows Server 2003 and after
UNIX/Linux
Mac OS X
- FTP: Built-in FTP server with bandwidth control
- Secure FTP:
Built-in secure FTP server with bandwidth control

TFTP:

- Users can download and upload files with TFTP programs

Download Manager:

- BT download (via Transmission module)
- NZB download (via NZB module)
- WebDAV/WebDAV SSL: Supported

Printer Server (IPP):

- 1. Supports USB printers
- 2. Supports a wide range of IPP printers
- 3. Client can manage print tasks (list/delete) via web user interface

Data Backup

- Client Incremental Data Backup:
Acronis True Image (OEM version)
- Client System Disaster Recovery:
Acronis True Image (OEM version)
- Local folder/iSCSI Backup: Supported
- Remote folder/iSCSI Backup: Supported
- Mac OS X Time Machine: Supported
- System failover: Supported
- Snapshot: Supported (Btrfs)

Block Level Access

- iSCSI Target/Initiator: Supports Microsoft/Mac OS X/ Linux initiators and Thecus NAS targets
- iSCSI Thin Provisioning: Supported
- MPIO: Supported
- MCS: Supported
- Clustering: Supported
- SCSI3 persistent group reservation: Supported

Power Management

- Scheduled Power On/Off: Supported

Volume Management

- Multiple RAID: Supported
- Multiple File System Selectable: EXT4/XFS/Btrfs

Multimedia Support

- iTunes Server: Supports AAC, MP3 w/ID3 tag and WAV
- Media Server: Supports uPnP AV streaming protocol (via Module)

User Authentication

- Local User: Supports built-in user accounts
- Local Group: Supports built-in user groups
- Windows ADS: Supported
- LDAP: Supported
- Access Guard: Supports Black & White list/IP Filter

User Profile

- Photo Center: Supported
- File Center: Supported
- App Center: Supported
- Surveillance Center: Supported

Cloud Backup

- DropBox: Supported (via module)
- ElephantDriver: Supported (via module)
- Amazon S3: Supported

File System

- Type: Journaling File System
- Language Support: Unicode Support
- Authorization (ACL): "Read", "write", or "deny" privileges to individual users or groups in folders and sub-folders
- User Quota: Supported (exclude Btrfs)
- Folder Quota: Supported (Btrfs only)

Administration

- User Interface: Web-based user interface supports English, Traditional Chinese, Simplified Chinese, Japanese, Korean, French, German, Italian, Spanish, Russian, Polish and Portuguese.
- Utility Program:
MS Windows Setup Wizard
Supports Windows XP and after
Mac OS X Setup Wizard
- Email Notifications: Sends system messages via email to the system administrator
- SNMP Trap: System information trap out
- P2P Connection: Mail or FB account to register

Mobile Applications (iOS/Android)

- Thecus Connect™ (Android):
Provides live up-to-date information of your NAS
- Thecus Wizard™: Offers fast NAS Setup via your phone
- T-OnTheGo™: Upload, download and stream multimedia
- Orbweb.me: Uploading, downloading, streaming multimedia and webcam via P2P connection

Data Security

- Antivirus: Supported (via module)

Capacity Expansion

- Stackable: Can extend for 5 additional iSCSI volumes from other Thecus NAS
- Scale-Out: Dynamic Volume Expansion

Others

- Recycled Bin: Supported
- Local Display: X-Window via HDMI output

Email: sales@thecus.com

Official Website: www.thecus.com

For Windows NAS: wss.thecus.com

Reseller Center: www.thecus.com/reseller_index.php

NAS App Center: www.thecus.com/sp_app_center.php

Facebook: www.facebook.com/Thecus

Forum: forum.thecus.com

Twitter: twitter.com/Thecus_Storage

RSS: www.thecus.com/rss_news.php

YouTube: www.youtube.com/thecusstorage

Blog: blog.thecus.com

Retail/Reseller Information