

Load the pre-build OS image of Windows Storage Server 2016 Workgroup into the W5810 v2.0 NAS

A. W5810 V2.0 NAS

W5810 v2.0 NAS is a storage server comes [without a Windows license included](#). The end customers will have to purchase the Windows license and install the OS image by themselves. The recommended OS will be Windows Storage Server 2016 Workgroup.

B. Necessary tools

1. W5810 v2.0 system x1
2. HDMI monitor x1
3. USB Keyboard/Mouse x1 set
4. USB recovery image x1
5. USB 2.0/3.0 flash drive 16GB x1

C. Build the Recovery USB Media

1. To install the pre-build Windows OS image, attach an HDMI monitor, USB keyboard/mouse to the NAS.
2. Use RUFUS tool to load the USB recovery tool onto a 16GB or bigger USB flash drive. <https://rufus.ie/>

名稱	修改日期	類型	大小
w5810v2-wss2016wg-usb-rescue-2019-05-09.img	2019/5/9 下午 03:57	光碟映像檔	15,126,528 KB
w5810v2-wss2016wg-usb-rescue-2019-05-09.img.sum	2019/5/9 下午 04:01	SUM 檔案	1 KB

3. The default booting device of W5810 V2.0 NAS is “USB Key”. So there is no need to change the boot order priority from the BIOS setup menu.

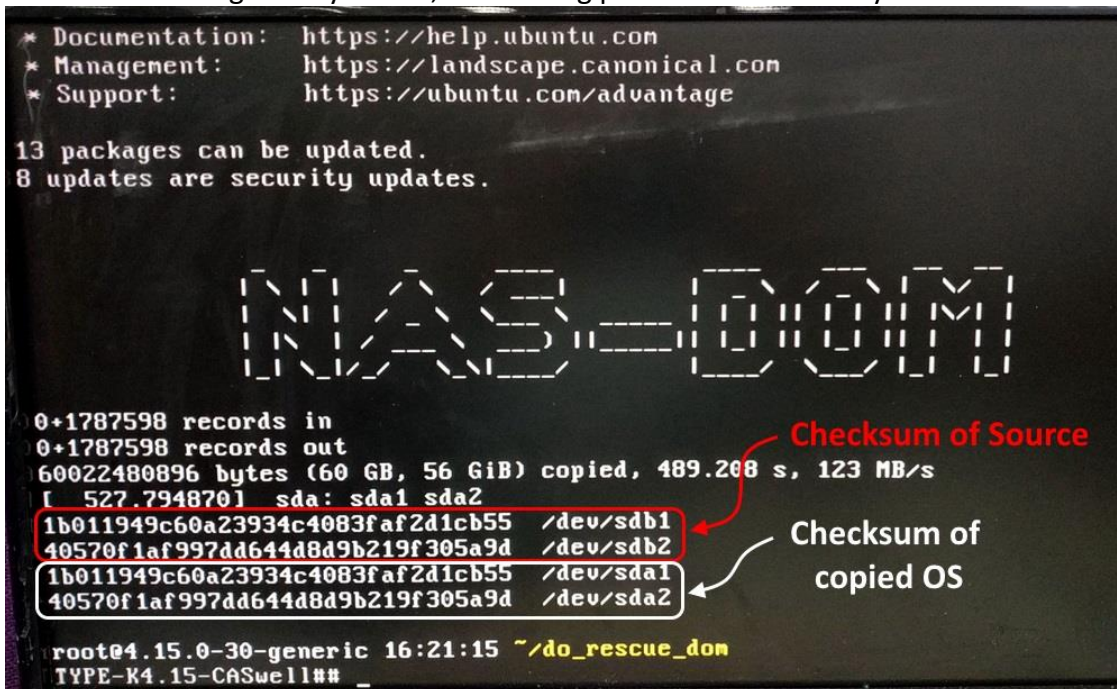


4. Insert the USB flash drive into the NAS and then boots up from it. The customized Ubuntu will start loading the pre-build WSS 2016 Workgroup OS image into the 60G SSD of W5810 v2.0 NAS. And it will take about 10 minutes.



D. Verify the OS image

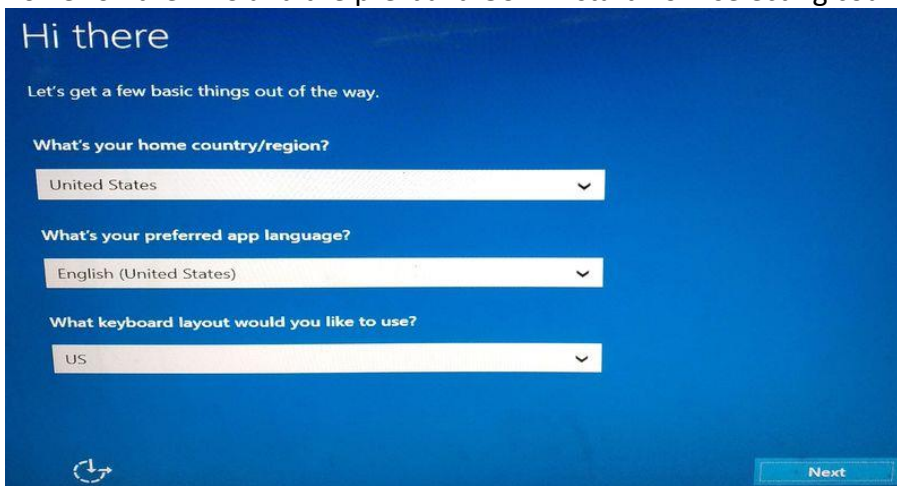
1. While the process finishes, the source checksum and copied OS checksum will be displayed together for visual checking. If they match, the loading process is successfully done.



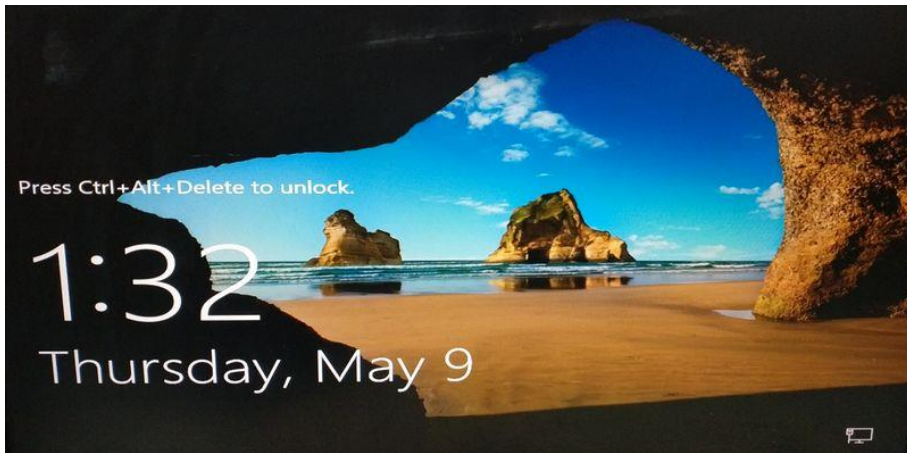
2. Shutdown the NAS by pressing the power button. Once it is off, pull out the USB flash drive.

E. Start up the W5810 NAS

1. Power on the NAS and the pre-build OS will start from selecting country and language.



2. The license KEY can be skipped and trial use the OS within 30 days.



End of File